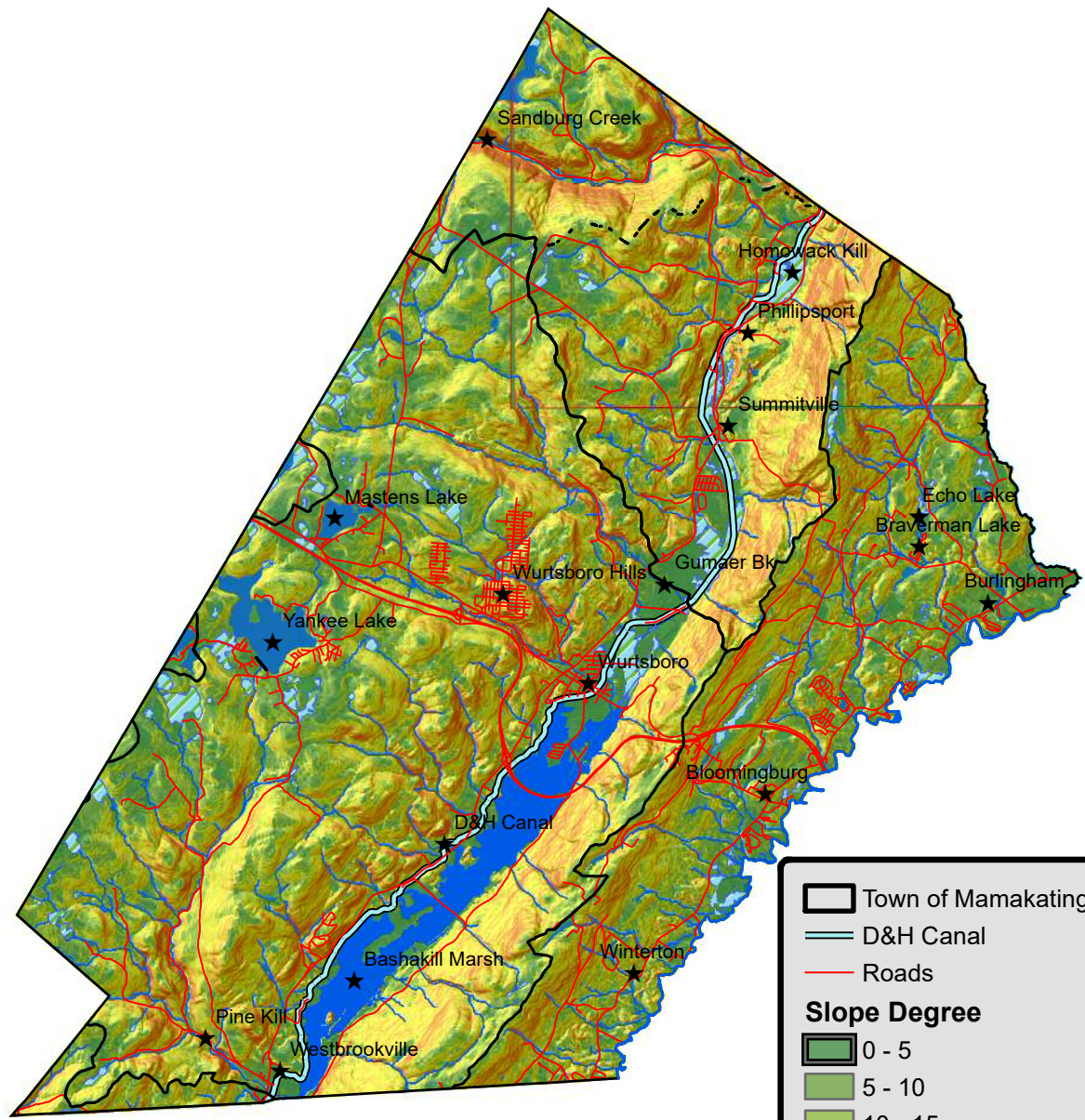
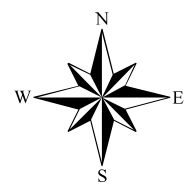


# Slope Degree Map of the Town of Mamakating

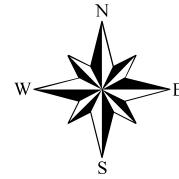


- Town of Mamakating
- D&H Canal
- Roads
- Slope Degree**
- 0 - 5
- 5 - 10
- 10 - 15
- 15 - 20
- 20 - 25
- 25 - 30
- 30 - 40
- 40 - 50
- 50 - 70
- 70 - 90

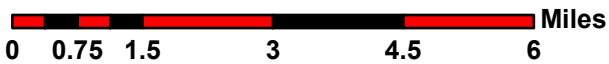
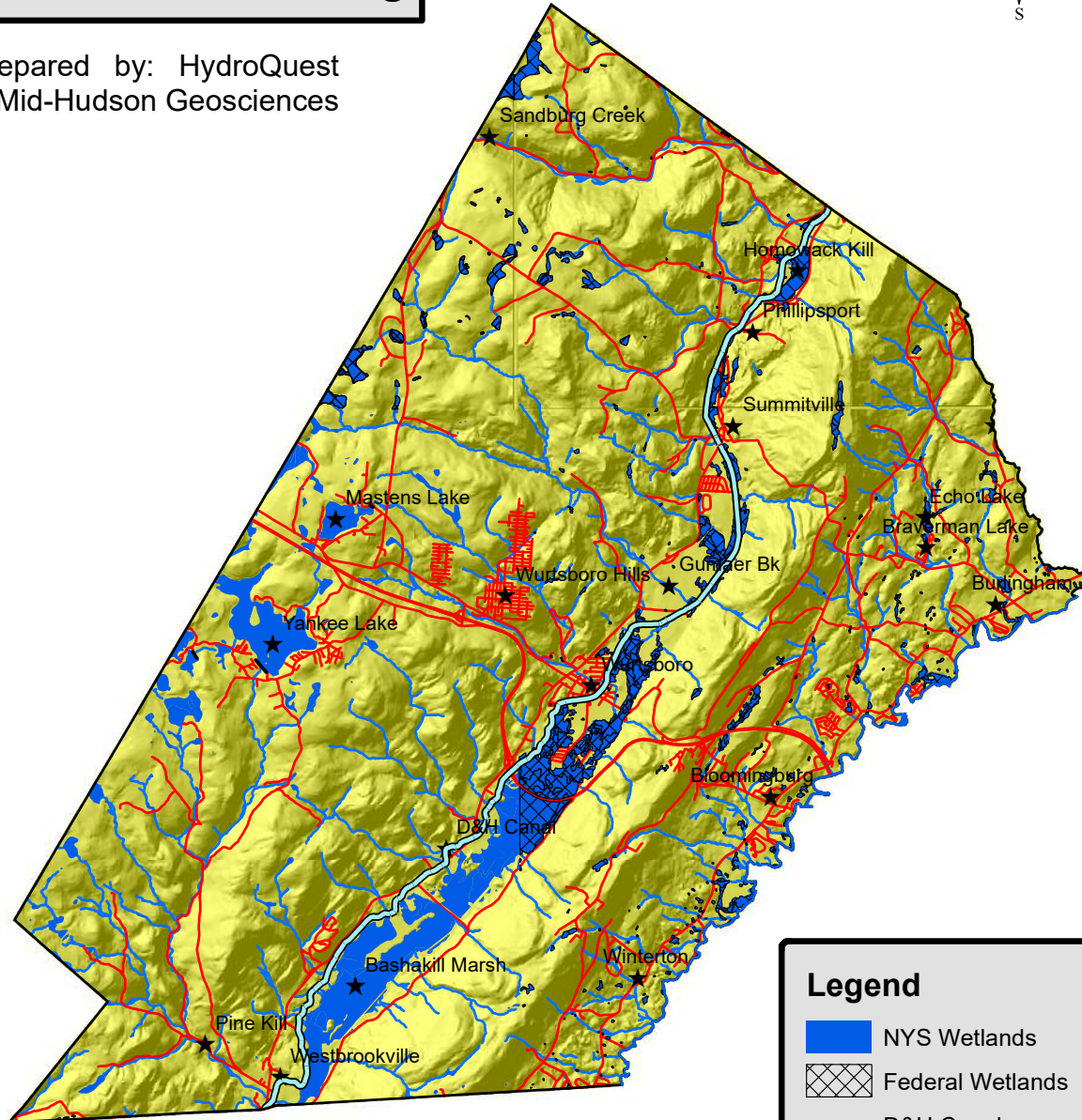


Prepared by: HydroQuest  
& Mid-Hudson Geosciences



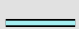
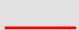
# State and Federal Wetlands in the Town of Mamakating



Prepared by: HydroQuest  
& Mid-Hudson Geosciences

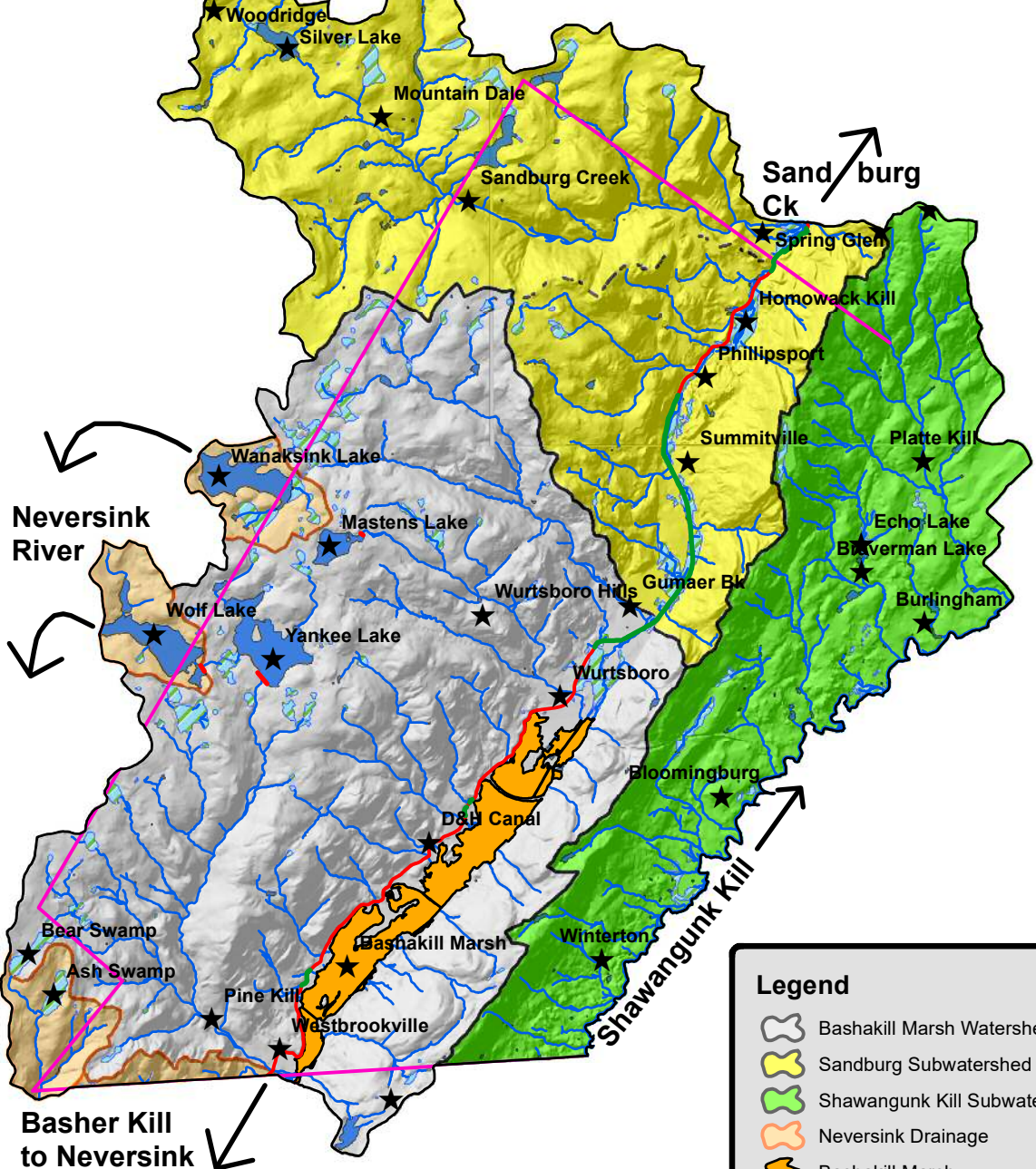
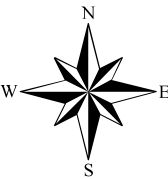


**Legend**

-  NYS Wetlands
-  Federal Wetlands
-  D&H Canal
-  Roads

**Note:** In places, NYS and Federal wetlands overlap. In other locations, wetland boundaries vary. Wetlands, including the Bashakill Marsh, that are portrayed on other maps in this project were mapped using high resolution color infrared imagery (CIR) and were not differentiated based on size. While this new CIR mapping provides higher quality wetland and stream mapping throughout the Town, development requires site-specific wetland delineation.

# Major Watersheds in the Town of Mamakating



**Basher Kill to Neversink River**

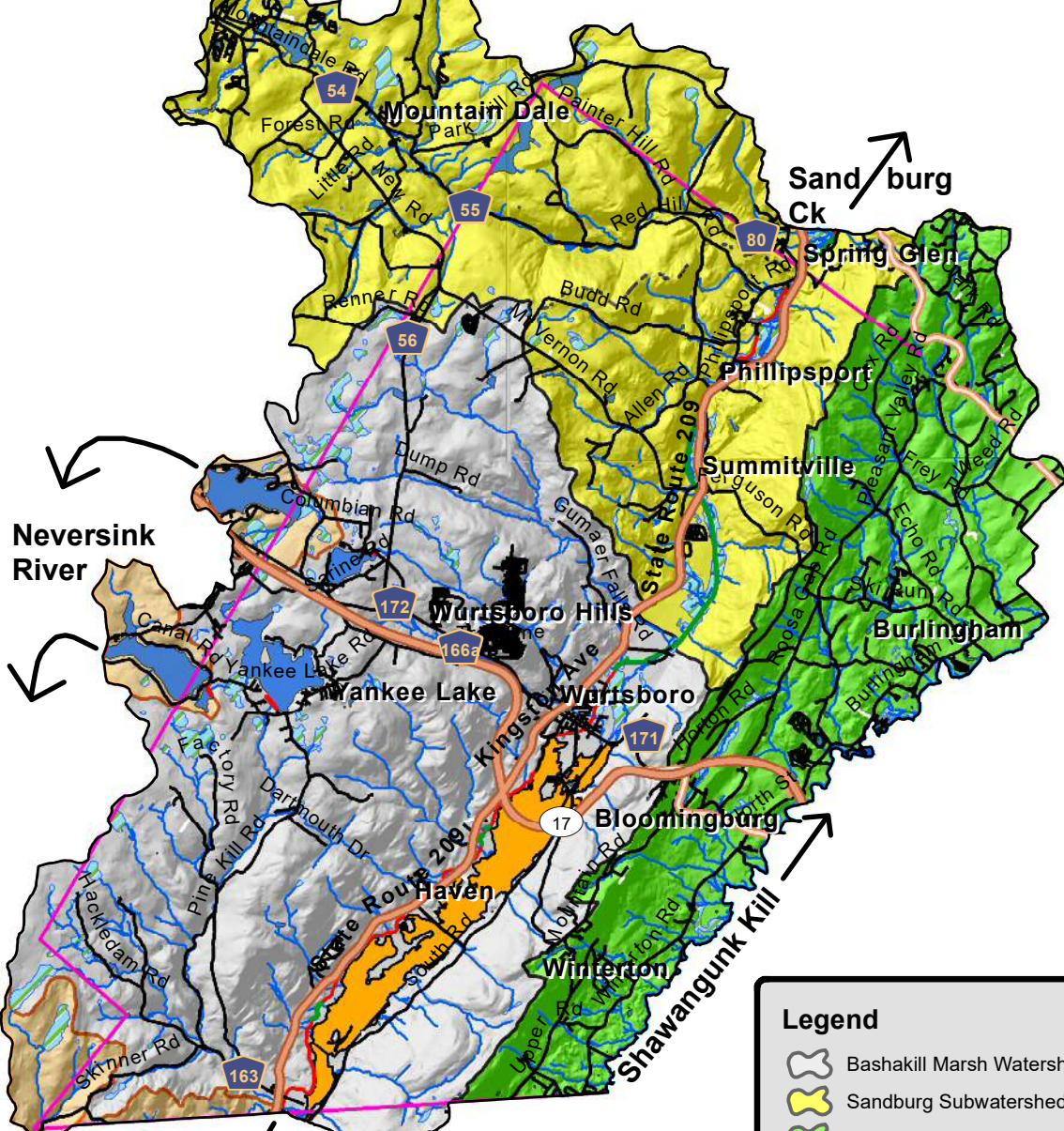
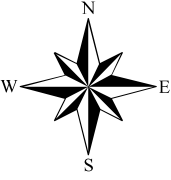
**Legend**

- Bashakill Marsh Watershed
- Sandburg Subwatershed
- Shawangunk Kill Subwatershed
- Neversink Drainage
- Bashakill Marsh
- D&H Canal - Water Filled
- D&H Canal



Hydrology & Cartography:  
HydroQuest April 2017

# Major Watersheds in the Town of Mamakating



**Basher Kill to Neversink River**

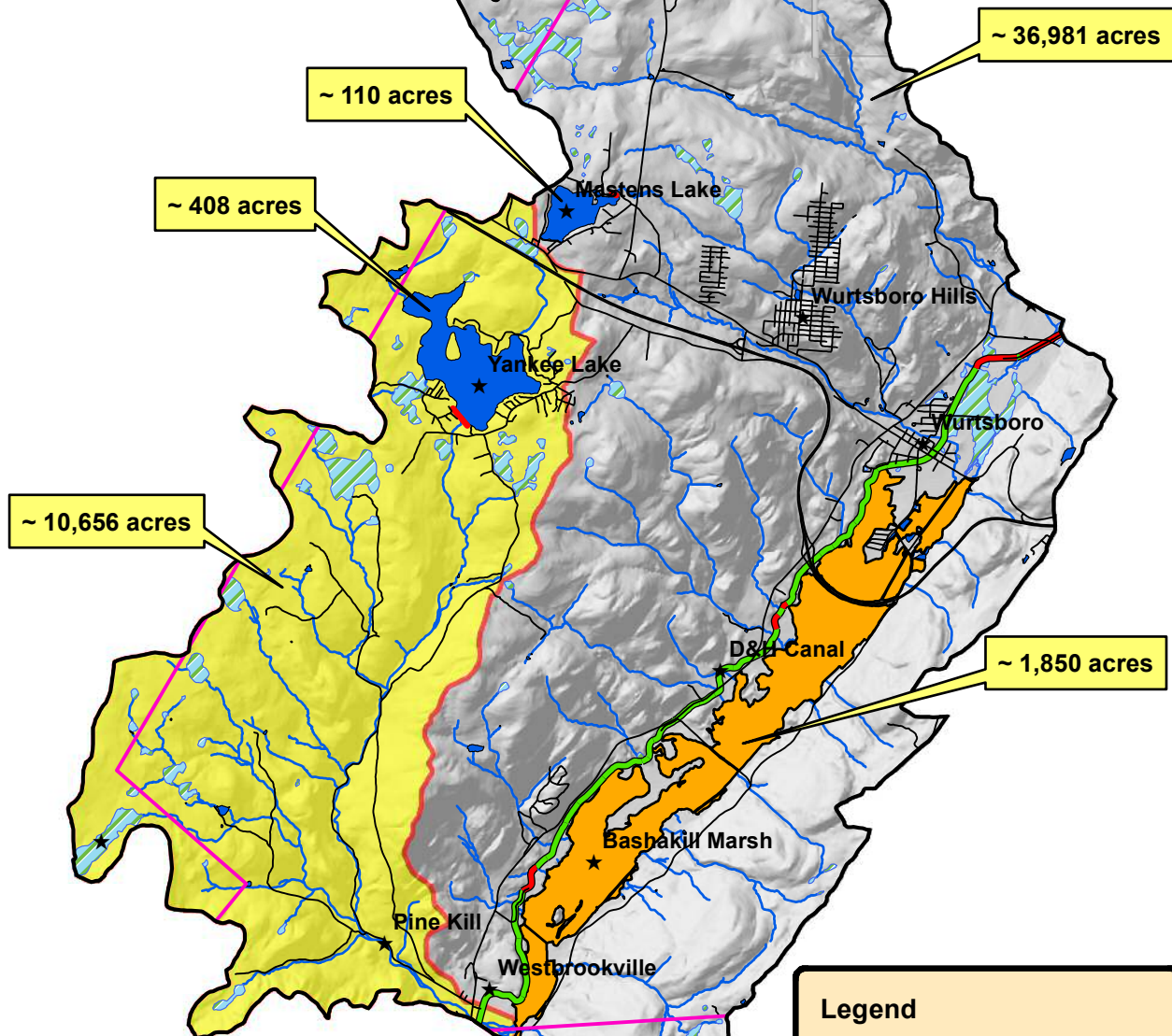
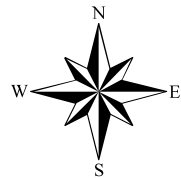
**Legend**

- Bashakill Marsh Watershed
- Sandburg Subwatershed
- Shawangunk Kill Subwatershed
- Neversink Drainage
- Bashakill Marsh
- D&H Canal - Water Filled
- D&H Canal



**Hydrology & Cartography:**  
**HydroQuest April 2017**

**Bashakill Marsh Watershed with Pine Kill Subbasin Highlighted; Town of Mamakating, New York**



The Pine Kill Subbasin is approx. 29 percent of the Bashakill Marsh Watershed.

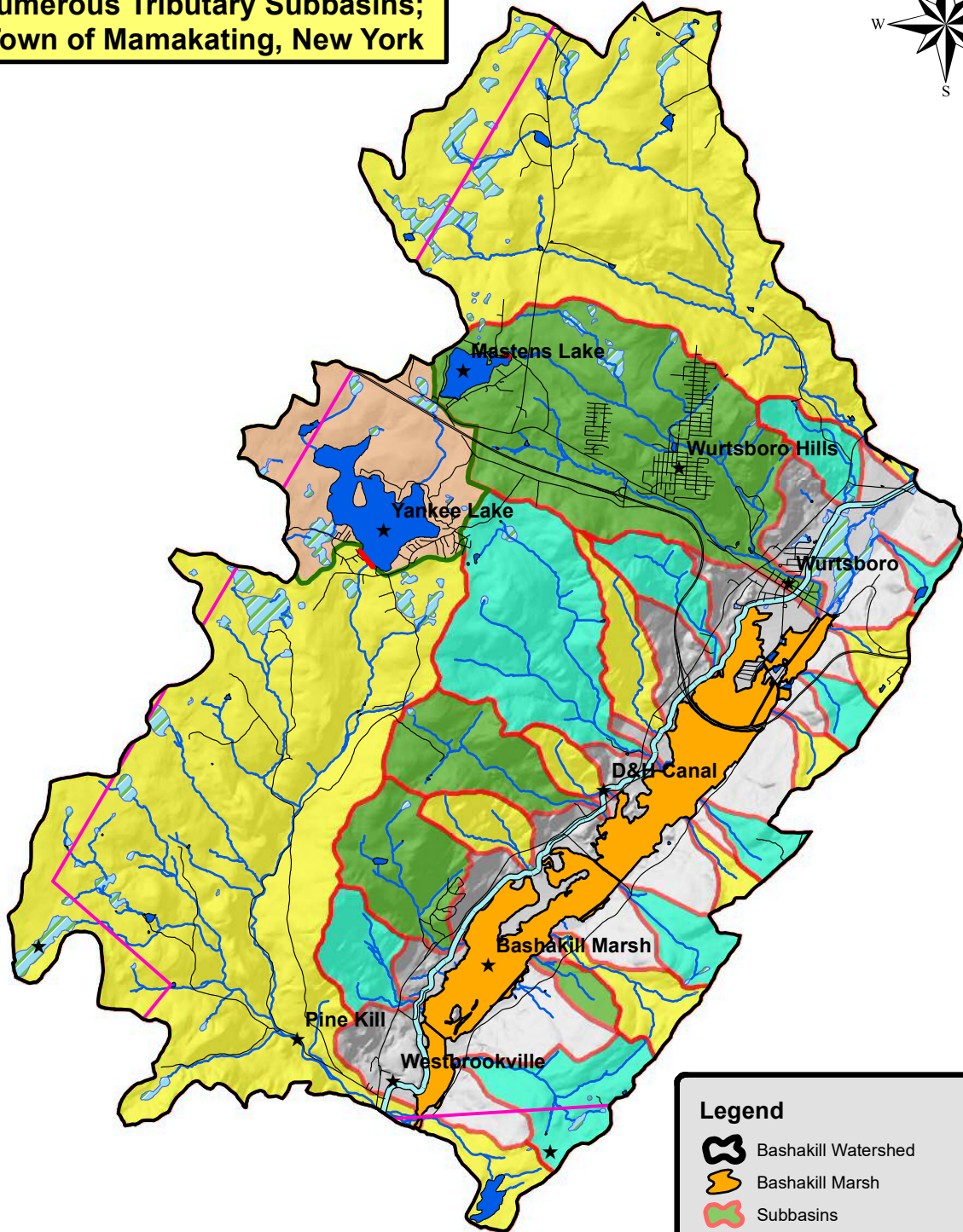
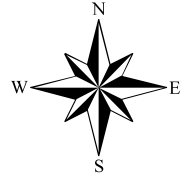
Hydrology & Cartography:  
HydroQuest April 2017



**Legend**

- Bashakill Marsh Watershed
- Pine Kill Subbasin
- Bashakill Marsh
- D&H Canal - Water Filled
- D&H Canal
- Mamakating Border Segments
- Dam Structure
- Roads

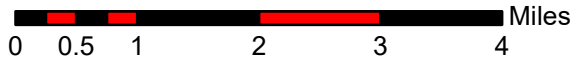
**Bashakill Marsh Watershed with  
Numerous Tributary Subbasins;  
Town of Mamakating, New York**



**Legend**

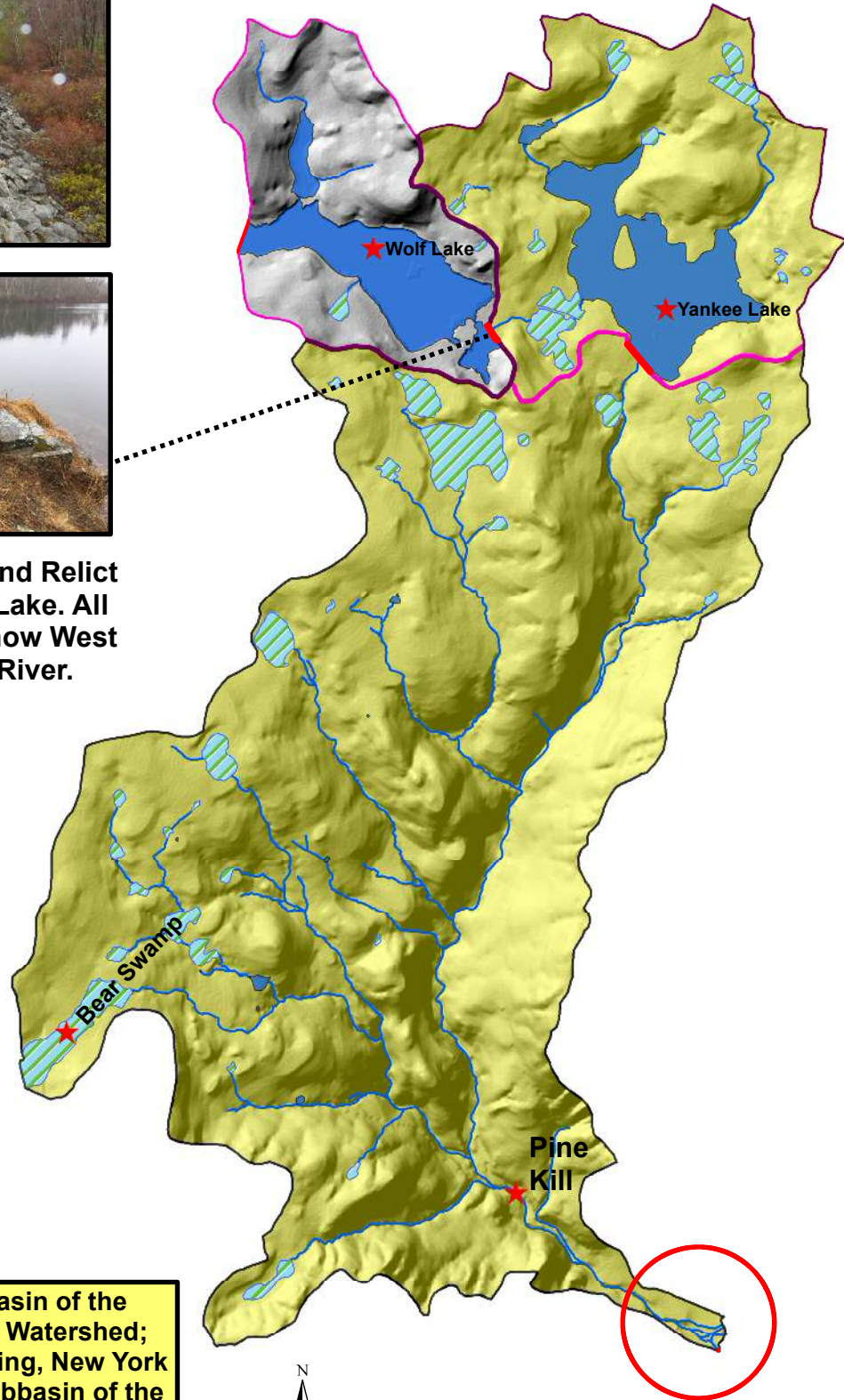
- Bashakill Watershed
- Bashakill Marsh
- Subbasins
- Undifferentiated
- Mamakating Border Segments
- Dam Structure
- D&H Canal
- Roads

**Hydrology & Cartography:  
HydroQuest April 2017**



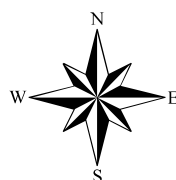


**Southeast Dam and Relict Spillway of Wolf Lake. All Lake Outflow is now West to the Neversink River.**



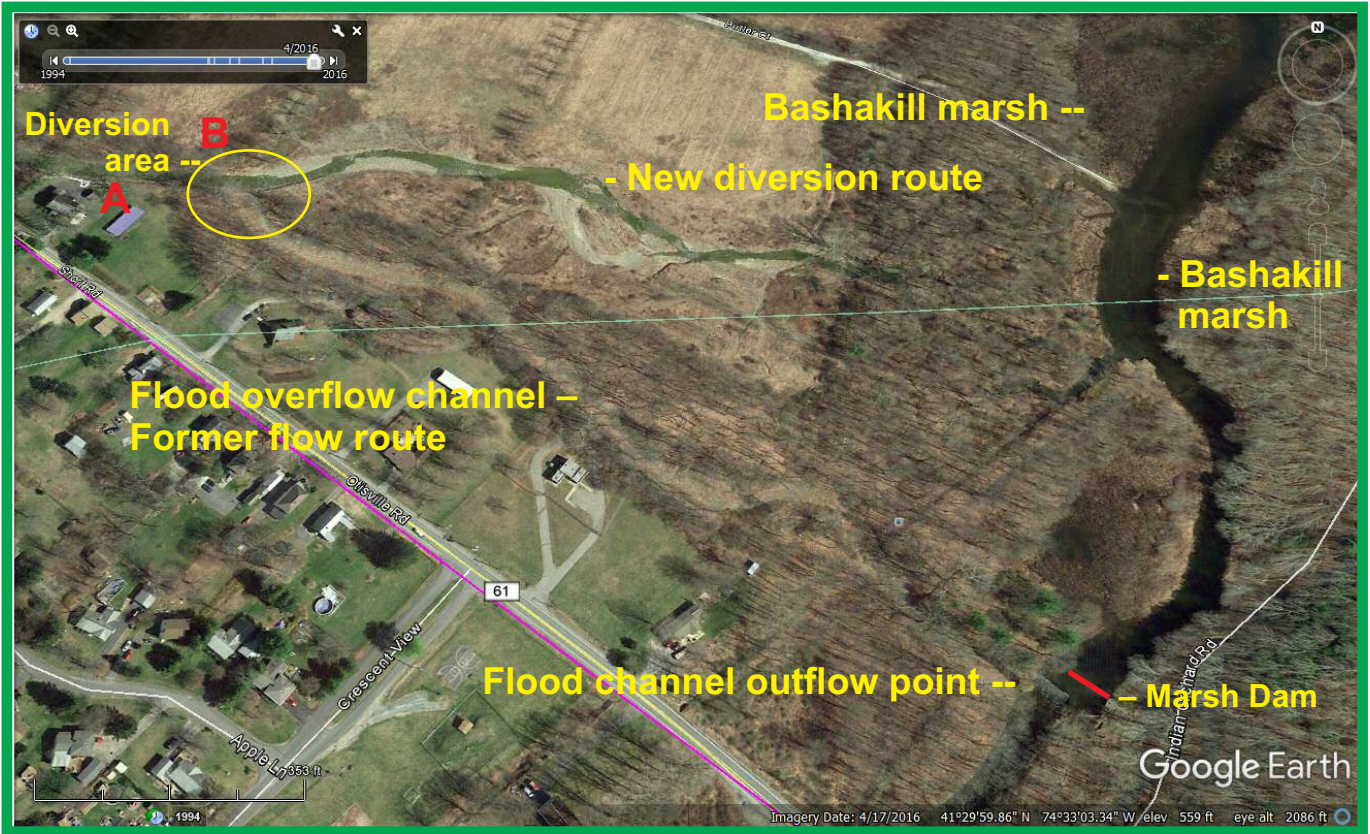
**Pine Kill Subbasin of the Bashakill Marsh Watershed;  
Town of Mamakating, New York  
and Wolf Lake Subbasin of the  
Neversink River**

**Hydrology & Cartography:  
HydroQuest April 2017**





# Diversion of the Pine Kill

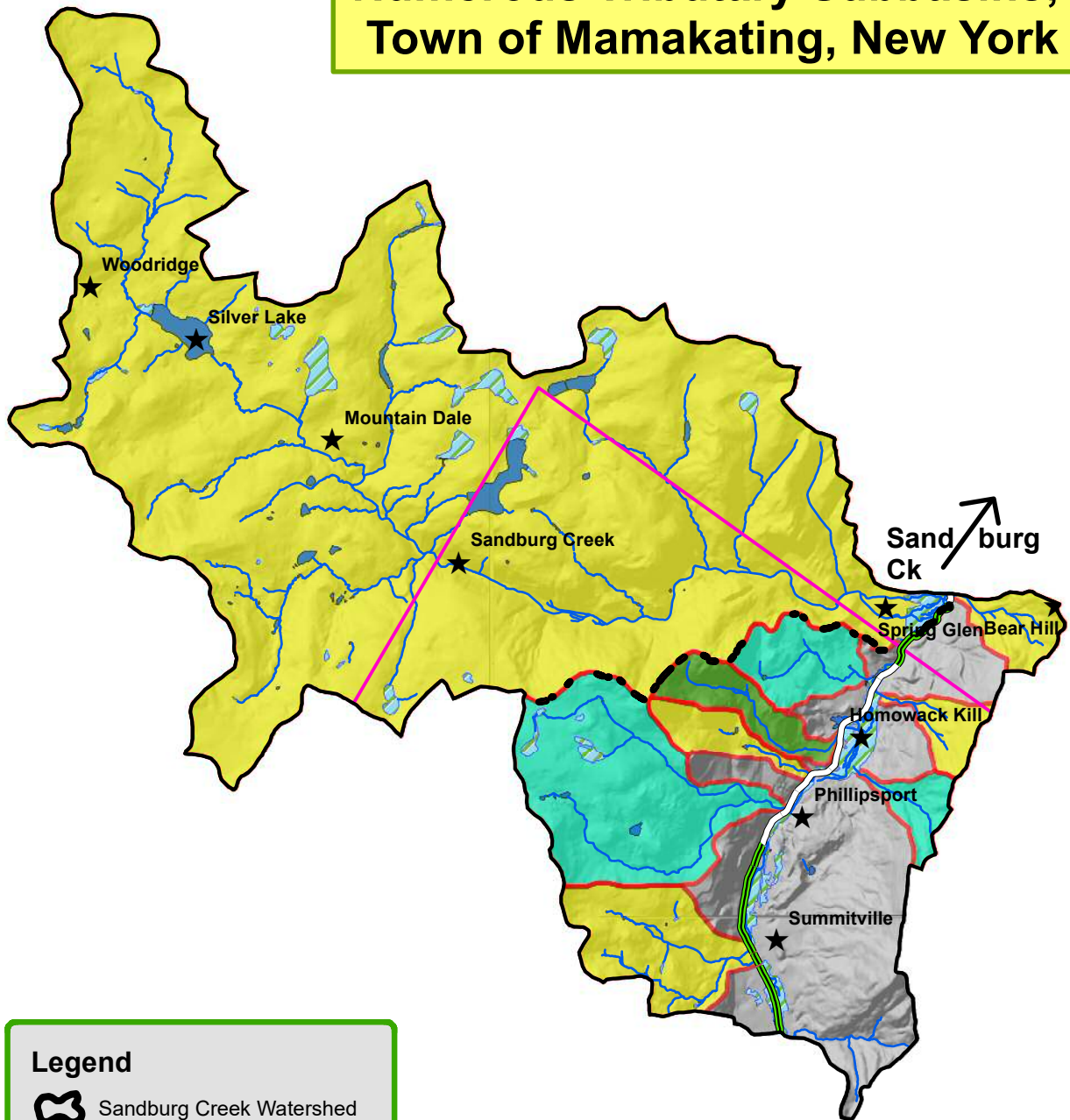


Location A. Channel fill material bermed up against backyard on stream right. Looking upstream.




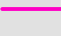
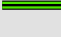



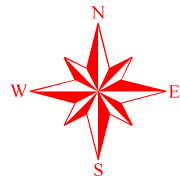
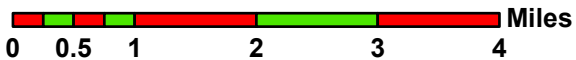
Location B. Looking downstream at new diversion point. Flow left of oval is now shunted into the Bashakill Marsh versus southwest of wetland in former channel.

# Sandburg Creek Watershed with Numerous Tributary Subbasins; Town of Mamakating, New York



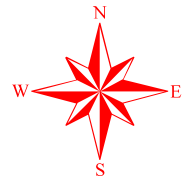
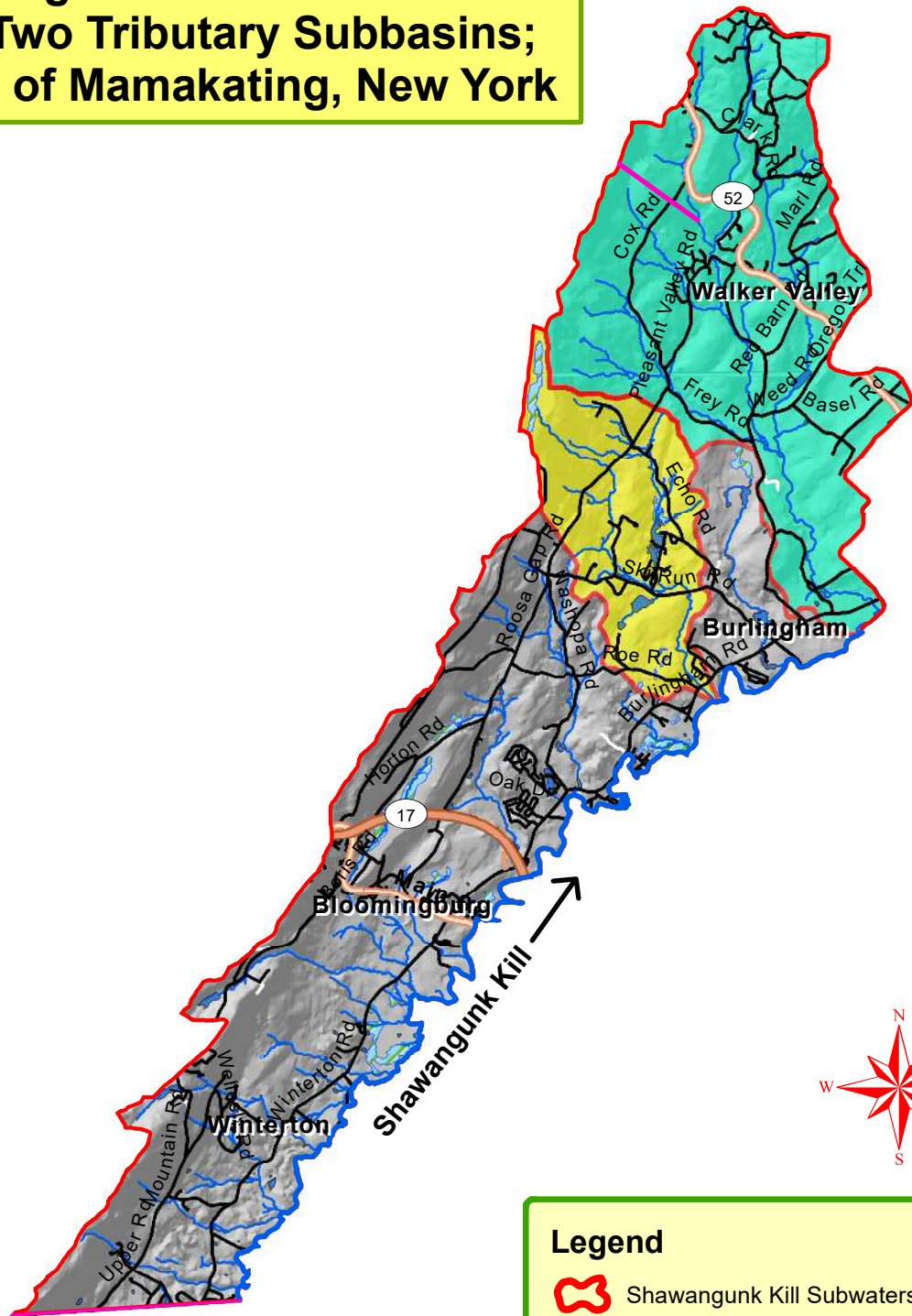
**Legend**

-  Sandburg Creek Watershed
-  Subbasins
-  Undifferentiated
-  Mamakating Border Segment
-  D&H Canal - Water Filled
-  D&H Canal



Hydrology & Cartography:  
HydroQuest

# Shawangunk Kill Subwatershed and Two Tributary Subbasins; Town of Mamakating, New York



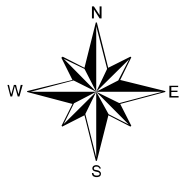
**Legend**

-  Shawangunk Kill Subwatershed
-  Platte Kill Subbasin
-  Echo Lake Subbasin
-  Undifferentiated
-  Mamakating Border Segments

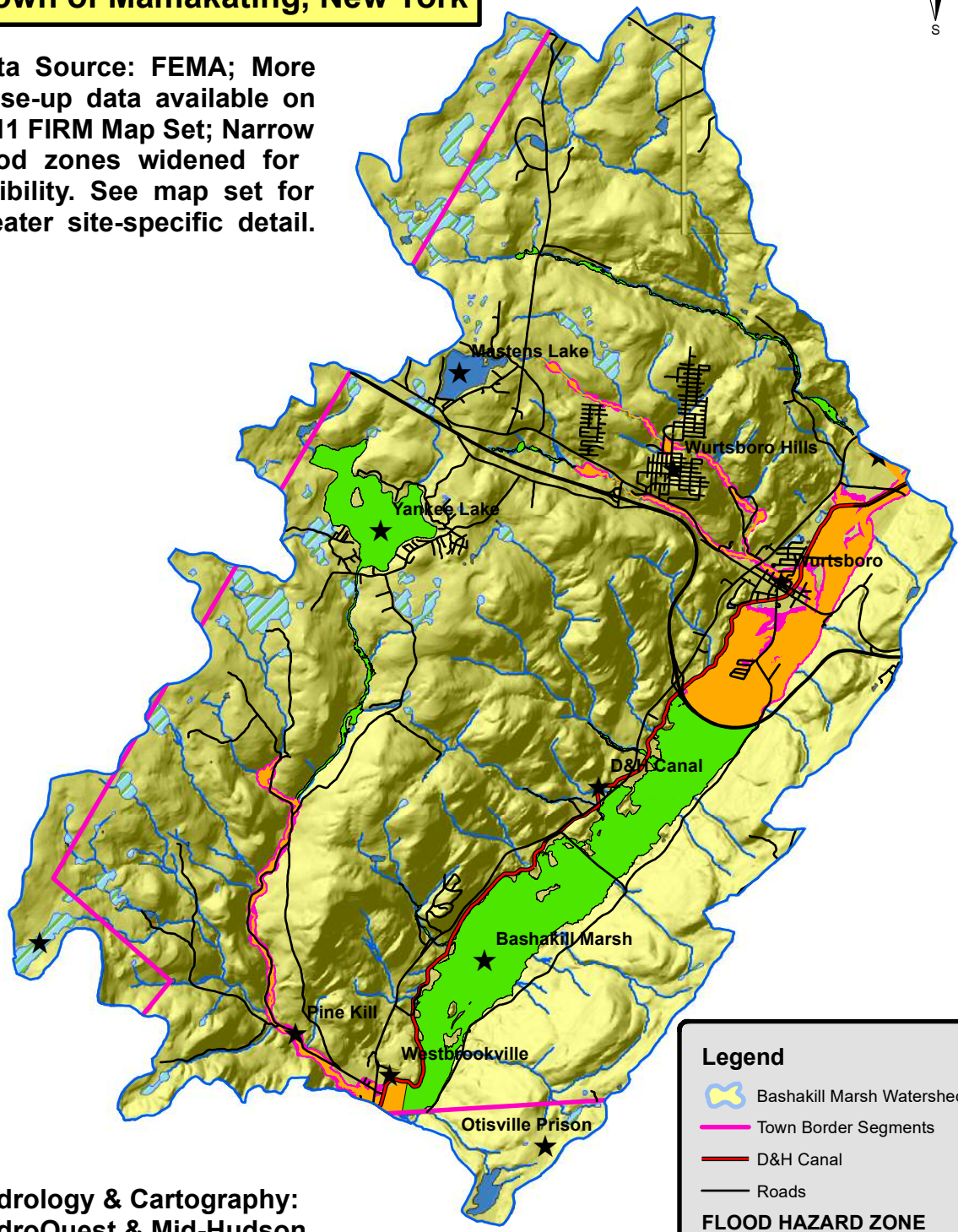
Hydrology & Cartography:  
HydroQuest



# Flood Hazard Zones in the Bashakill Marsh Watershed; Town of Mamakating, New York



Data Source: FEMA; More close-up data available on 2011 FIRM Map Set; Narrow flood zones widened for visibility. See map set for greater site-specific detail.



**Legend**

- Bashakill Marsh Watershed
- Town Border Segments
- D&H Canal
- Roads

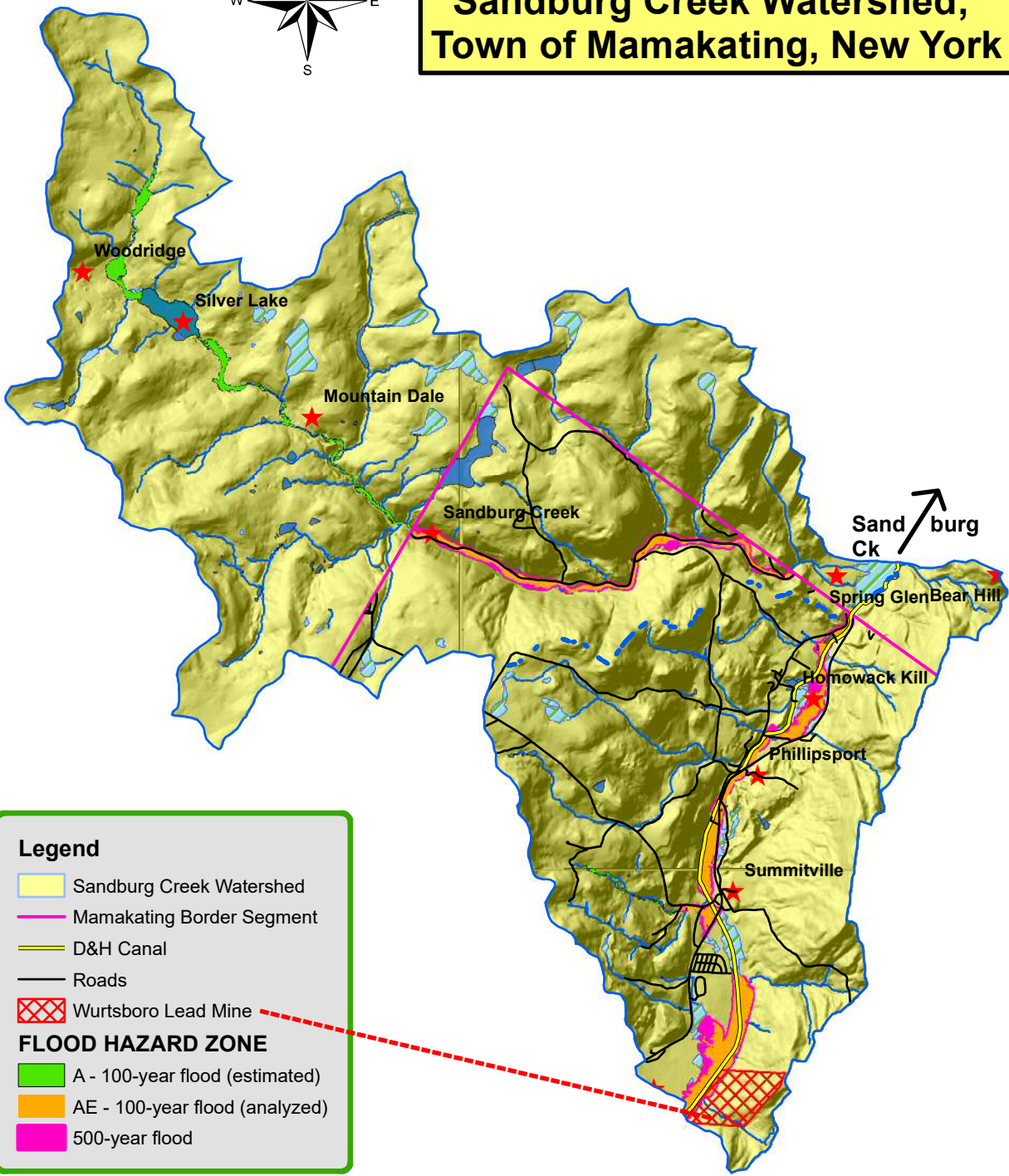
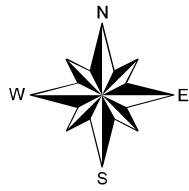
**FLOOD HAZARD ZONE**

- A - 100-year flood (estimated)
- AE - 100-year flood (analyzed)
- 500-year flood

Hydrology & Cartography:  
HydroQuest & Mid-Hudson  
Geosciences April 2017



# Flood Hazard Zones in the Sandburg Creek Watershed; Town of Mamakating, New York



**Legend**

- Sandburg Creek Watershed
- Mamakating Border Segment
- D&H Canal
- Roads
- Wurtsboro Lead Mine

**FLOOD HAZARD ZONE**

- A - 100-year flood (estimated)
- AE - 100-year flood (analyzed)
- 500-year flood

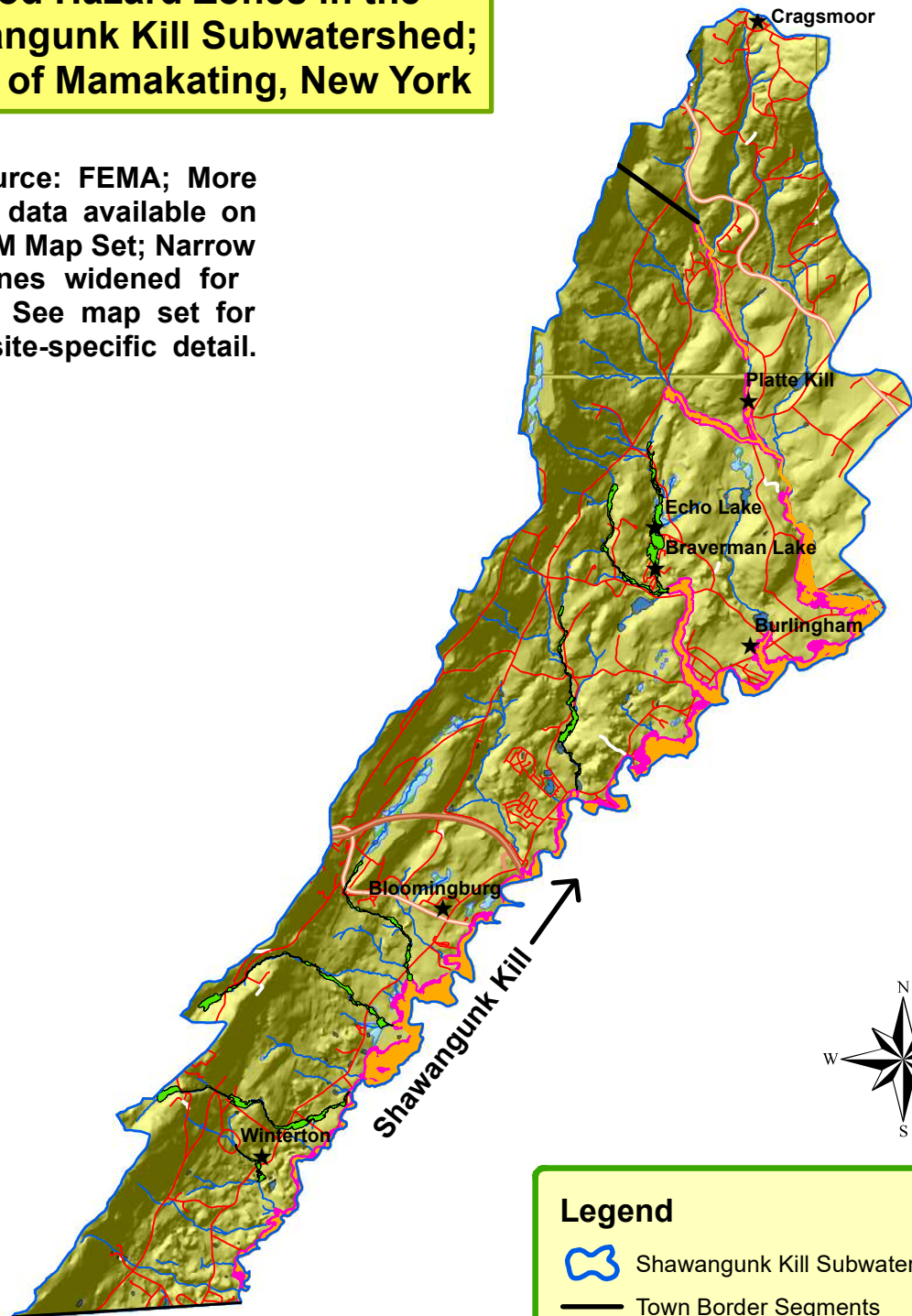


Hydrology & Cartography:  
 HydroQuest & Mid-Hudson  
 Geosciences April 2017

Data Source: FEMA; More close-up data available on 2011 FIRM Map Set; Narrow flood zones widened for visibility. See map set for greater site-specific detail.

# Flood Hazard Zones in the Shawangunk Kill Subwatershed; Town of Mamakating, New York

Data Source: FEMA; More close-up data available on 2011 FIRM Map Set; Narrow flood zones widened for visibility. See map set for greater site-specific detail.



Hydrology & Cartography:  
HydroQuest & Mid-Hudson  
Geosciences

**Legend**

- Shawangunk Kill Subwatershed
- Town Border Segments

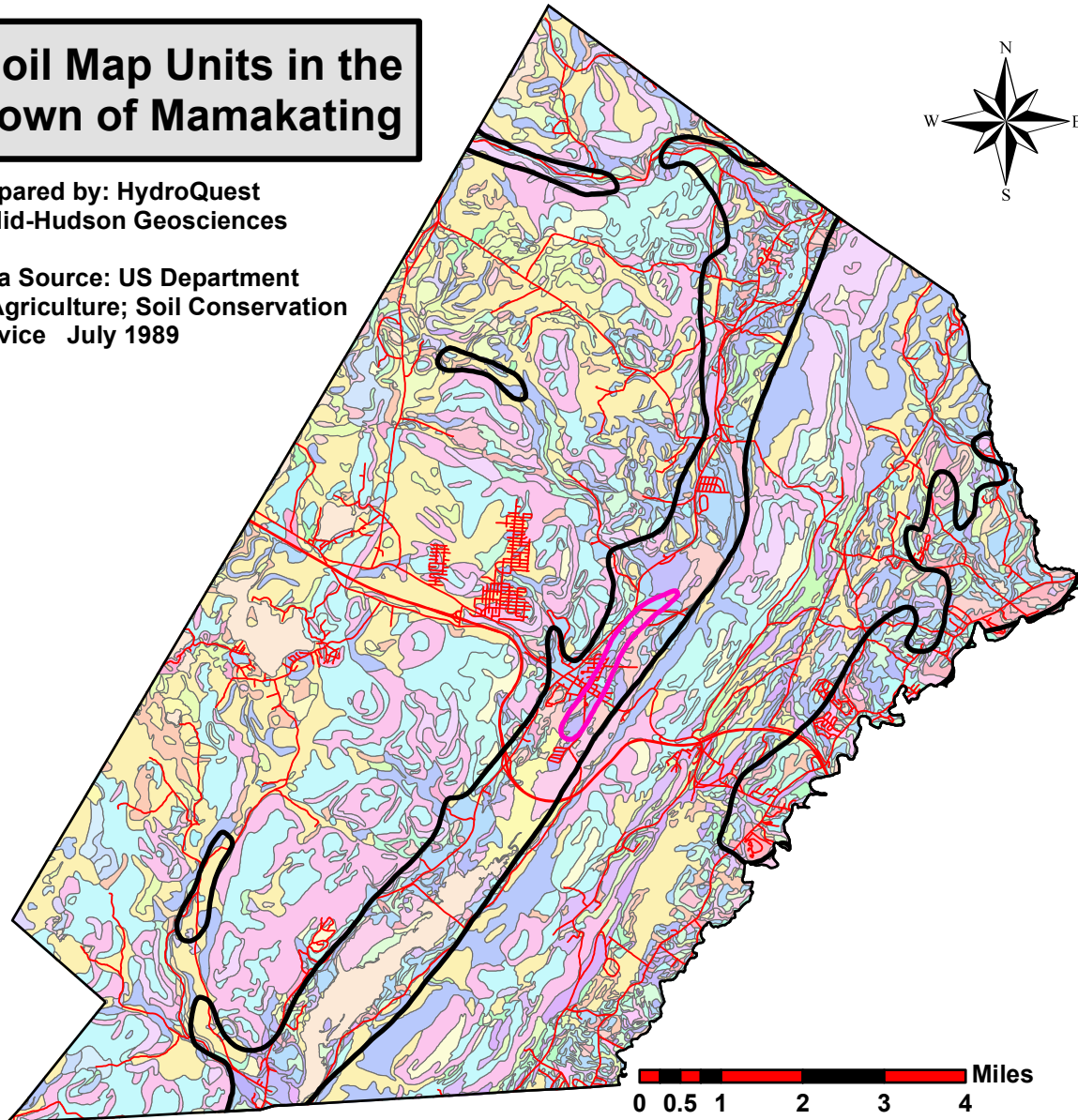
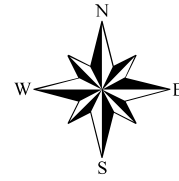
**FLOOD HAZARD ZONE**

- A - 100-year flood (estimated)
- AE - 100-year flood (analyzed)
- 500-year flood

# Soil Map Units in the Town of Mamakating

Prepared by: HydroQuest  
& Mid-Hudson Geosciences

Data Source: US Department  
of Agriculture; Soil Conservation  
Service July 1989



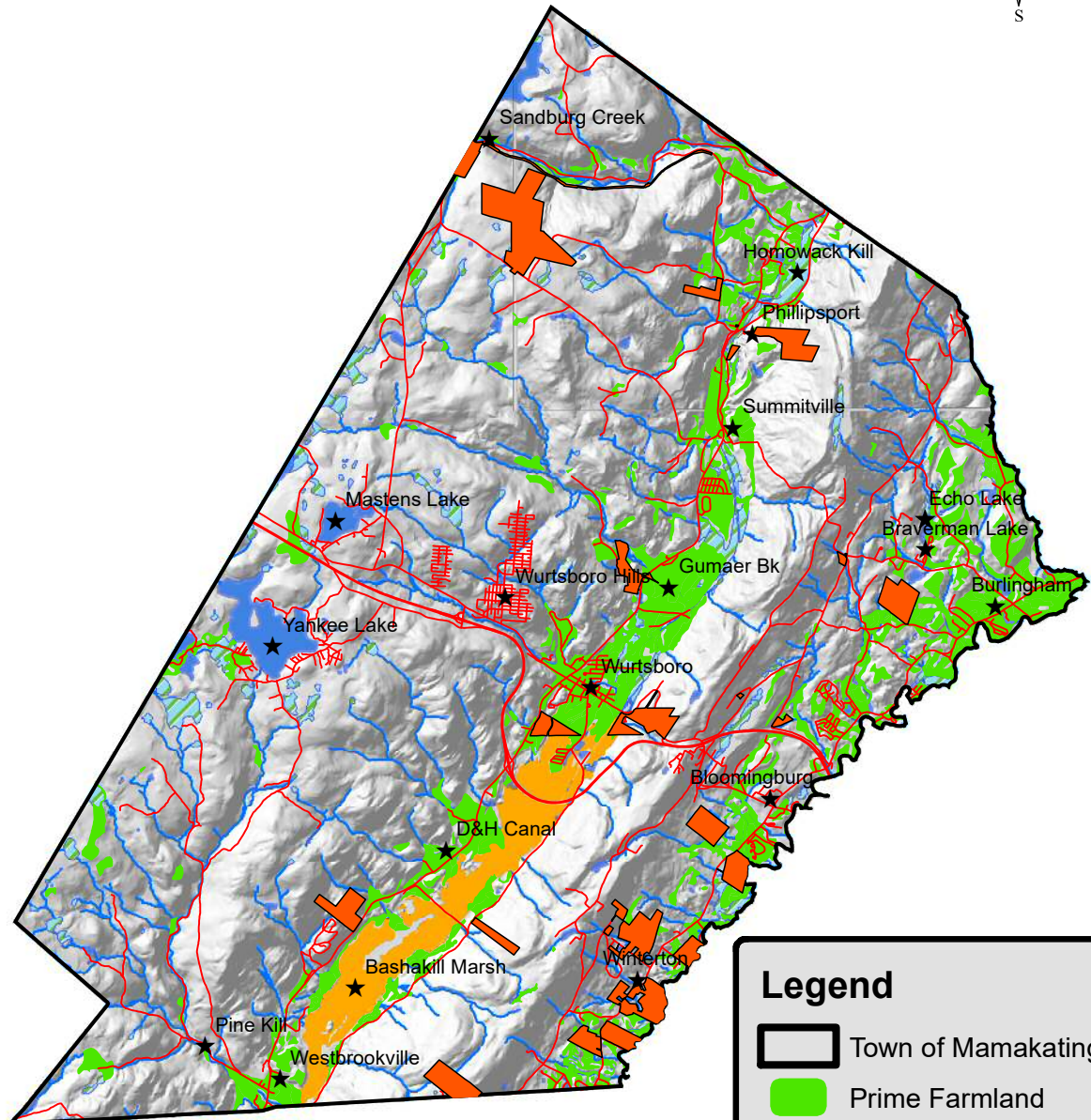
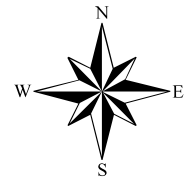
**Legend**

- Uncon Yield GT 100 gpm
- Uncon Yield 10-100 gpm
- Streets

**Soil Units**

<span style="display: inline-block; width: 15px; height: 10px; background-color: #fce4d6;"></span> Ad	<span style="display: inline-block; width: 15px; height: 10px; background-color: #d1ecf1;"></span> AIC	<span style="display: inline-block; width: 15px; height: 10px; background-color: #d4edda;"></span> AIE	<span style="display: inline-block; width: 15px; height: 10px; background-color: #d1ecf1;"></span> AoC	<span style="display: inline-block; width: 15px; height: 10px; background-color: #d4edda;"></span> AoE	<span style="display: inline-block; width: 15px; height: 10px; background-color: #fff3cd;"></span> ArC	<span style="display: inline-block; width: 15px; height: 10px; background-color: #d1ecf1;"></span> ArE	<span style="display: inline-block; width: 15px; height: 10px; background-color: #d4edda;"></span> ArF	<span style="display: inline-block; width: 15px; height: 10px; background-color: #d1ecf1;"></span> Bb	<span style="display: inline-block; width: 15px; height: 10px; background-color: #d4edda;"></span> Bs	<span style="display: inline-block; width: 15px; height: 10px; background-color: #d1ecf1;"></span> Ca	<span style="display: inline-block; width: 15px; height: 10px; background-color: #fff3cd;"></span> Ce	<span style="display: inline-block; width: 15px; height: 10px; background-color: #d1ecf1;"></span> ChA	<span style="display: inline-block; width: 15px; height: 10px; background-color: #d4edda;"></span> ChB	<span style="display: inline-block; width: 15px; height: 10px; background-color: #d1ecf1;"></span> ChC	<span style="display: inline-block; width: 15px; height: 10px; background-color: #d4edda;"></span> ChD	<span style="display: inline-block; width: 15px; height: 10px; background-color: #d1ecf1;"></span> CsB	<span style="display: inline-block; width: 15px; height: 10px; background-color: #d4edda;"></span> CsC	<span style="display: inline-block; width: 15px; height: 10px; background-color: #d1ecf1;"></span> CsD	<span style="display: inline-block; width: 15px; height: 10px; background-color: #d4edda;"></span> CsE	<span style="display: inline-block; width: 15px; height: 10px; background-color: #d1ecf1;"></span> CsF	<span style="display: inline-block; width: 15px; height: 10px; background-color: #d4edda;"></span> EIB	<span style="display: inline-block; width: 15px; height: 10px; background-color: #d1ecf1;"></span> EIC	<span style="display: inline-block; width: 15px; height: 10px; background-color: #d4edda;"></span> EID	<span style="display: inline-block; width: 15px; height: 10px; background-color: #d1ecf1;"></span> EIE	<span style="display: inline-block; width: 15px; height: 10px; background-color: #d4edda;"></span> EIF	<span style="display: inline-block; width: 15px; height: 10px; background-color: #d1ecf1;"></span> Fu	<span style="display: inline-block; width: 15px; height: 10px; background-color: #d4edda;"></span> Gn	<span style="display: inline-block; width: 15px; height: 10px; background-color: #d1ecf1;"></span> HaC	<span style="display: inline-block; width: 15px; height: 10px; background-color: #d4edda;"></span> HaE	<span style="display: inline-block; width: 15px; height: 10px; background-color: #d1ecf1;"></span> LaB	<span style="display: inline-block; width: 15px; height: 10px; background-color: #d4edda;"></span> LaC	<span style="display: inline-block; width: 15px; height: 10px; background-color: #d1ecf1;"></span> LaD	<span style="display: inline-block; width: 15px; height: 10px; background-color: #d4edda;"></span> LeB	<span style="display: inline-block; width: 15px; height: 10px; background-color: #d1ecf1;"></span> LeC	<span style="display: inline-block; width: 15px; height: 10px; background-color: #d4edda;"></span> LeD	<span style="display: inline-block; width: 15px; height: 10px; background-color: #d1ecf1;"></span> LfE	<span style="display: inline-block; width: 15px; height: 10px; background-color: #d4edda;"></span> LfF	<span style="display: inline-block; width: 15px; height: 10px; background-color: #d1ecf1;"></span> LrC	<span style="display: inline-block; width: 15px; height: 10px; background-color: #d4edda;"></span> LrC	<span style="display: inline-block; width: 15px; height: 10px; background-color: #d1ecf1;"></span> MaB	<span style="display: inline-block; width: 15px; height: 10px; background-color: #d4edda;"></span> MaC	<span style="display: inline-block; width: 15px; height: 10px; background-color: #d1ecf1;"></span> MaD	<span style="display: inline-block; width: 15px; height: 10px; background-color: #d4edda;"></span> MaD	<span style="display: inline-block; width: 15px; height: 10px; background-color: #d1ecf1;"></span> MdB	<span style="display: inline-block; width: 15px; height: 10px; background-color: #d4edda;"></span> MdC	<span style="display: inline-block; width: 15px; height: 10px; background-color: #d1ecf1;"></span> MnB	<span style="display: inline-block; width: 15px; height: 10px; background-color: #d4edda;"></span> MnC	<span style="display: inline-block; width: 15px; height: 10px; background-color: #d1ecf1;"></span> MnD	<span style="display: inline-block; width: 15px; height: 10px; background-color: #d4edda;"></span> MrA	<span style="display: inline-block; width: 15px; height: 10px; background-color: #d1ecf1;"></span> MrC	<span style="display: inline-block; width: 15px; height: 10px; background-color: #d4edda;"></span> MrC	<span style="display: inline-block; width: 15px; height: 10px; background-color: #d1ecf1;"></span> MrC	<span style="display: inline-block; width: 15px; height: 10px; background-color: #d4edda;"></span> Ne	<span style="display: inline-block; width: 15px; height: 10px; background-color: #d1ecf1;"></span> Nf	<span style="display: inline-block; width: 15px; height: 10px; background-color: #d4edda;"></span> OaA	<span style="display: inline-block; width: 15px; height: 10px; background-color: #d1ecf1;"></span> OaB	<span style="display: inline-block; width: 15px; height: 10px; background-color: #d4edda;"></span> OaC	<span style="display: inline-block; width: 15px; height: 10px; background-color: #d1ecf1;"></span> OaC	<span style="display: inline-block; width: 15px; height: 10px; background-color: #d4edda;"></span> ObB	<span style="display: inline-block; width: 15px; height: 10px; background-color: #d1ecf1;"></span> ObB	<span style="display: inline-block; width: 15px; height: 10px; background-color: #d4edda;"></span> OeB	<span style="display: inline-block; width: 15px; height: 10px; background-color: #d1ecf1;"></span> OgC	<span style="display: inline-block; width: 15px; height: 10px; background-color: #d4edda;"></span> OgD	<span style="display: inline-block; width: 15px; height: 10px; background-color: #d1ecf1;"></span> Os	<span style="display: inline-block; width: 15px; height: 10px; background-color: #d4edda;"></span> Ota	<span style="display: inline-block; width: 15px; height: 10px; background-color: #d1ecf1;"></span> Ota	<span style="display: inline-block; width: 15px; height: 10px; background-color: #d4edda;"></span> Otb	<span style="display: inline-block; width: 15px; height: 10px; background-color: #d1ecf1;"></span> Otd	<span style="display: inline-block; width: 15px; height: 10px; background-color: #d4edda;"></span> Otd	<span style="display: inline-block; width: 15px; height: 10px; background-color: #d1ecf1;"></span> Pa	<span style="display: inline-block; width: 15px; height: 10px; background-color: #d4edda;"></span> Pa	<span style="display: inline-block; width: 15px; height: 10px; background-color: #d1ecf1;"></span> Pe	<span style="display: inline-block; width: 15px; height: 10px; background-color: #d4edda;"></span> Pe	<span style="display: inline-block; width: 15px; height: 10px; background-color: #d1ecf1;"></span> Pg	<span style="display: inline-block; width: 15px; height: 10px; background-color: #d4edda;"></span> Ph	<span style="display: inline-block; width: 15px; height: 10px; background-color: #d1ecf1;"></span> PmA	<span style="display: inline-block; width: 15px; height: 10px; background-color: #d4edda;"></span> PmB	<span style="display: inline-block; width: 15px; height: 10px; background-color: #d1ecf1;"></span> Po	<span style="display: inline-block; width: 15px; height: 10px; background-color: #d4edda;"></span> Pp	<span style="display: inline-block; width: 15px; height: 10px; background-color: #d1ecf1;"></span> Ra	<span style="display: inline-block; width: 15px; height: 10px; background-color: #d4edda;"></span> Ra	<span style="display: inline-block; width: 15px; height: 10px; background-color: #d1ecf1;"></span> Re	<span style="display: inline-block; width: 15px; height: 10px; background-color: #d4edda;"></span> RhA	<span style="display: inline-block; width: 15px; height: 10px; background-color: #d1ecf1;"></span> RhB	<span style="display: inline-block; width: 15px; height: 10px; background-color: #d4edda;"></span> RhC	<span style="display: inline-block; width: 15px; height: 10px; background-color: #d1ecf1;"></span> SaB	<span style="display: inline-block; width: 15px; height: 10px; background-color: #d4edda;"></span> SaB	<span style="display: inline-block; width: 15px; height: 10px; background-color: #d1ecf1;"></span> ScA	<span style="display: inline-block; width: 15px; height: 10px; background-color: #d4edda;"></span> ScB	<span style="display: inline-block; width: 15px; height: 10px; background-color: #d1ecf1;"></span> SeB	<span style="display: inline-block; width: 15px; height: 10px; background-color: #d4edda;"></span> Sn	<span style="display: inline-block; width: 15px; height: 10px; background-color: #d1ecf1;"></span> So	<span style="display: inline-block; width: 15px; height: 10px; background-color: #d4edda;"></span> Sp	<span style="display: inline-block; width: 15px; height: 10px; background-color: #d1ecf1;"></span> SrB	<span style="display: inline-block; width: 15px; height: 10px; background-color: #d4edda;"></span> SrC	<span style="display: inline-block; width: 15px; height: 10px; background-color: #d1ecf1;"></span> SrD	<span style="display: inline-block; width: 15px; height: 10px; background-color: #d4edda;"></span> Ste	<span style="display: inline-block; width: 15px; height: 10px; background-color: #d1ecf1;"></span> SwE	<span style="display: inline-block; width: 15px; height: 10px; background-color: #d4edda;"></span> SwF	<span style="display: inline-block; width: 15px; height: 10px; background-color: #d1ecf1;"></span> TaB	<span style="display: inline-block; width: 15px; height: 10px; background-color: #d4edda;"></span> TeB	<span style="display: inline-block; width: 15px; height: 10px; background-color: #d1ecf1;"></span> TKA	<span style="display: inline-block; width: 15px; height: 10px; background-color: #d4edda;"></span> TKB	<span style="display: inline-block; width: 15px; height: 10px; background-color: #d1ecf1;"></span> TkC	<span style="display: inline-block; width: 15px; height: 10px; background-color: #d4edda;"></span> TkD	<span style="display: inline-block; width: 15px; height: 10px; background-color: #d1ecf1;"></span> ToE	<span style="display: inline-block; width: 15px; height: 10px; background-color: #d4edda;"></span> ToF	<span style="display: inline-block; width: 15px; height: 10px; background-color: #d1ecf1;"></span> UnA	<span style="display: inline-block; width: 15px; height: 10px; background-color: #d4edda;"></span> UnB	<span style="display: inline-block; width: 15px; height: 10px; background-color: #d1ecf1;"></span> UnB	<span style="display: inline-block; width: 15px; height: 10px; background-color: #d4edda;"></span> VaC	<span style="display: inline-block; width: 15px; height: 10px; background-color: #d1ecf1;"></span> VaD	<span style="display: inline-block; width: 15px; height: 10px; background-color: #d4edda;"></span> VaE	<span style="display: inline-block; width: 15px; height: 10px; background-color: #d1ecf1;"></span> VaF	<span style="display: inline-block; width: 15px; height: 10px; background-color: #d4edda;"></span> W	<span style="display: inline-block; width: 15px; height: 10px; background-color: #d1ecf1;"></span> Wa	<span style="display: inline-block; width: 15px; height: 10px; background-color: #d4edda;"></span> Wd	<span style="display: inline-block; width: 15px; height: 10px; background-color: #d1ecf1;"></span> WeA	<span style="display: inline-block; width: 15px; height: 10px; background-color: #d4edda;"></span> WeB	<span style="display: inline-block; width: 15px; height: 10px; background-color: #d1ecf1;"></span> WeC	<span style="display: inline-block; width: 15px; height: 10px; background-color: #d4edda;"></span> WeC	<span style="display: inline-block; width: 15px; height: 10px; background-color: #d1ecf1;"></span> WIC	<span style="display: inline-block; width: 15px; height: 10px; background-color: #d4edda;"></span> WmB	<span style="display: inline-block; width: 15px; height: 10px; background-color: #d1ecf1;"></span> WmC	<span style="display: inline-block; width: 15px; height: 10px; background-color: #d4edda;"></span> WoC	<span style="display: inline-block; width: 15px; height: 10px; background-color: #d1ecf1;"></span> WuA	<span style="display: inline-block; width: 15px; height: 10px; background-color: #d4edda;"></span> WuB	<span style="display: inline-block; width: 15px; height: 10px; background-color: #d1ecf1;"></span> WuC
---	--	--	--	--	--	--	--	---	---	---	---	--	--	--	--	--	--	--	--	--	--	--	--	--	--	---	---	--	--	--	--	--	--	--	--	--	--	--	--	--	--	--	--	--	--	--	--	--	--	--	--	--	---	---	--	--	--	--	--	--	--	--	--	---	--	--	--	--	--	---	---	---	---	---	---	--	--	---	---	---	---	---	--	--	--	--	--	--	--	--	---	---	---	--	--	--	--	--	--	--	--	--	--	--	--	--	--	--	--	--	--	--	--	--	--	---	---	--	--	--	--	--	--	--	--	--	--	--

**Prime Farmland:  
Agricultural Suitability  
in the Town of Mamakating**



**Legend**

- Town of Mamakating
- Prime Farmland
- Ag District 4
- Bashakill Marsh
- Ponds & Lakes
- Streams
- Wetlands
- Roads

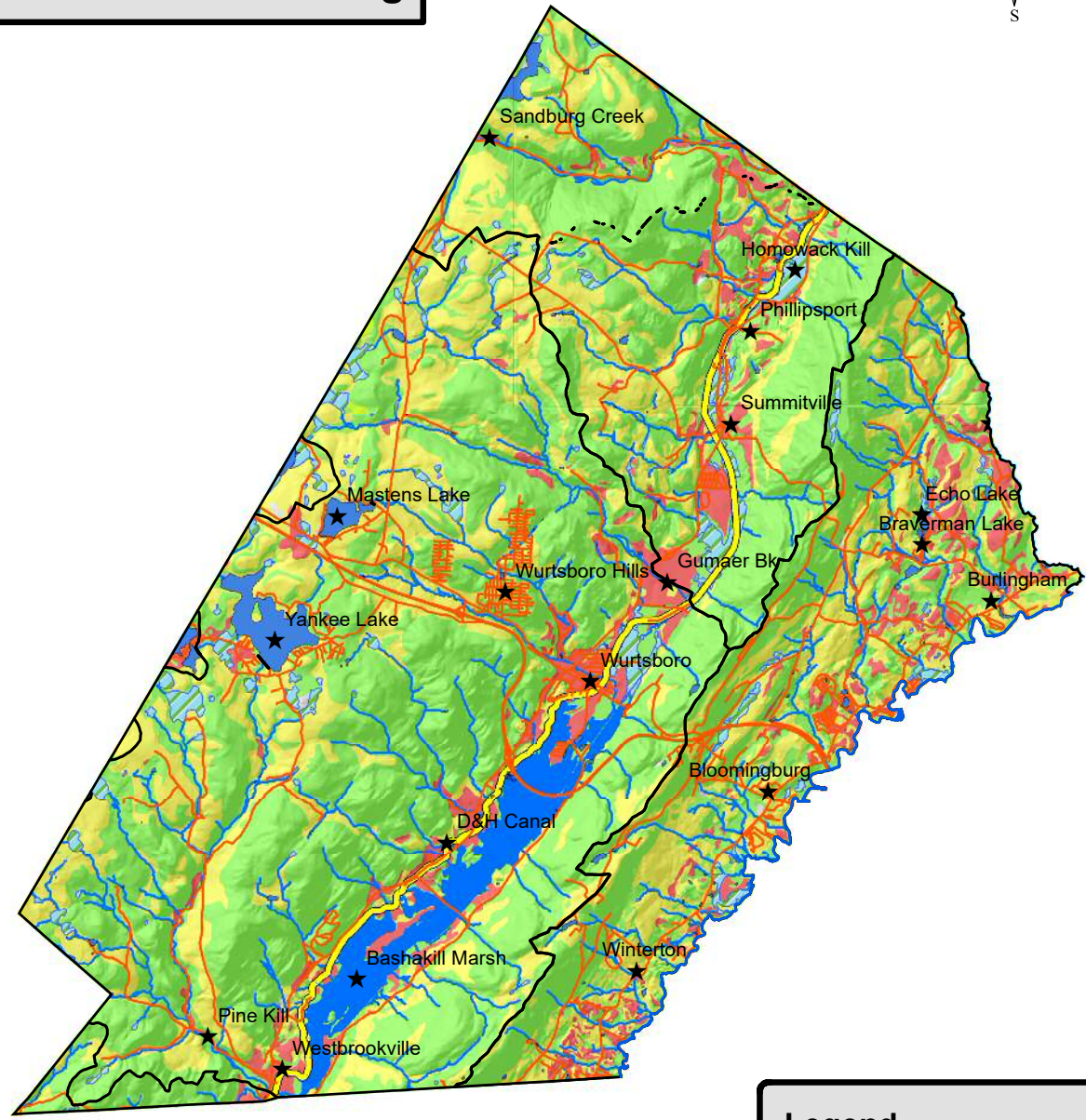
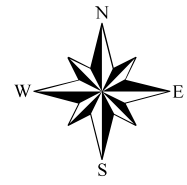
Prepared by: HydroQuest  
& Mid-Hudson Geosciences

Data Source: US Department  
of Agriculture; Soil Conservation  
Service July 1989





# Soil Suitability for Building in the Town of Mamakating

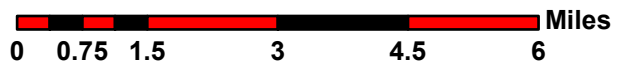


**Legend**

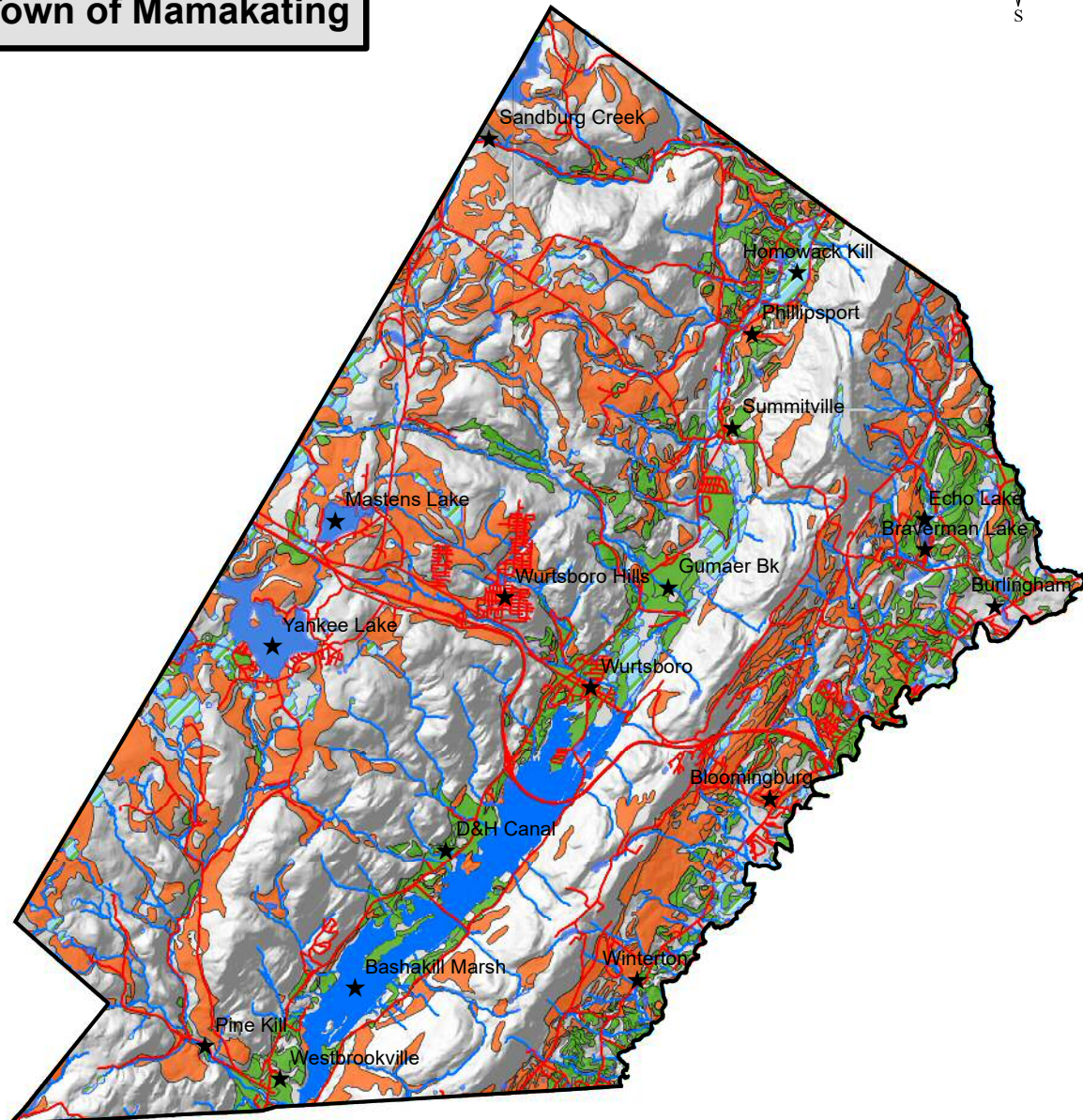
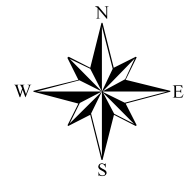
- Slightly Restricted
- Moderately Restricted
- Severely Restricted
- Major Watersheds
- Roads
- D&H Canal

Prepared by: HydroQuest & Mid-Hudson Geosciences

Data Source: US Department of Agriculture; Soil Conservation Service July 1989




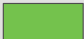
# Soil Suitability for Roadfill Construction Material in the Town of Mamakating



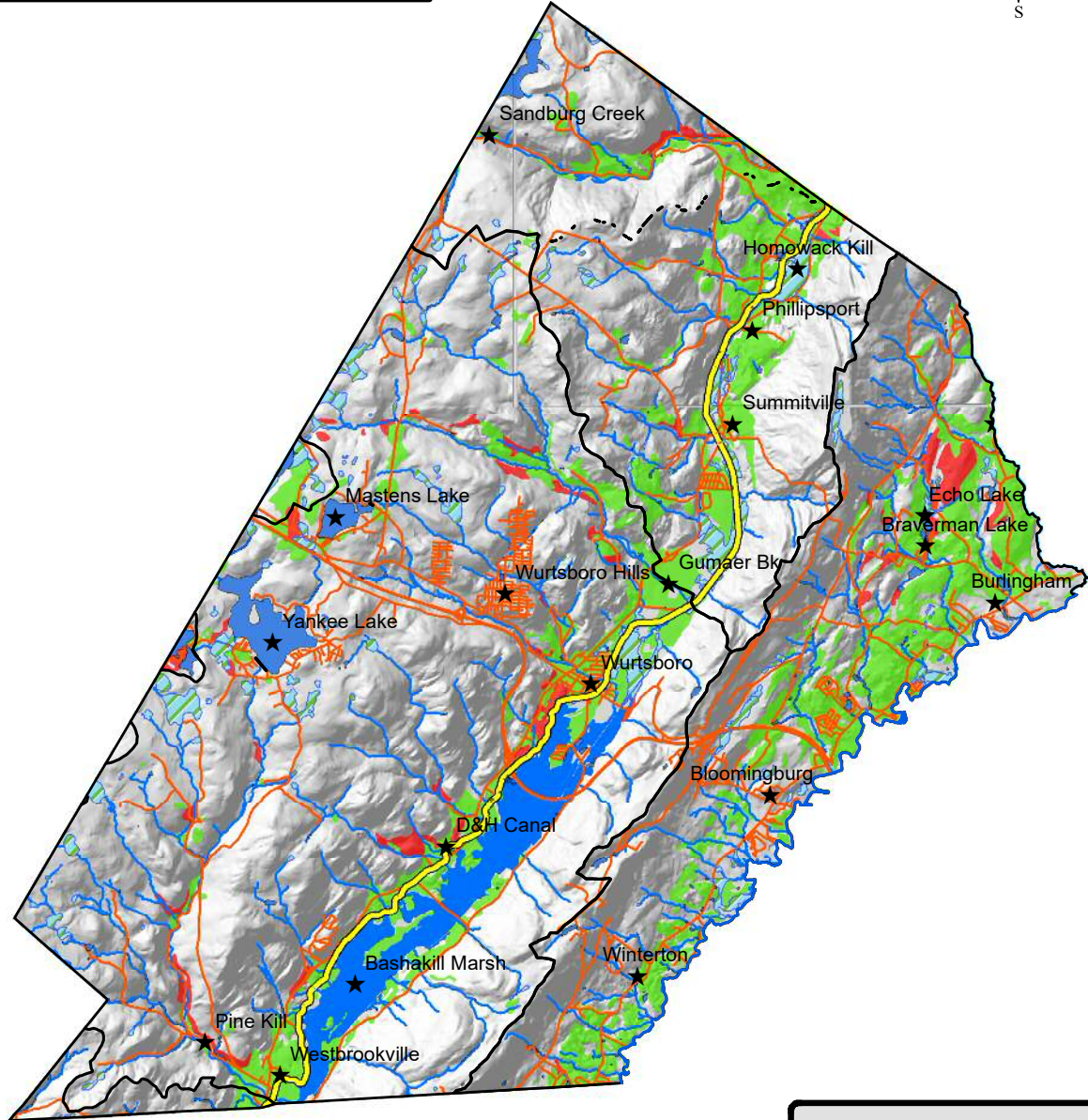
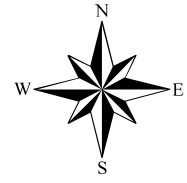
Prepared by: HydroQuest  
& Mid-Hudson Geosciences

Data Source: US Department  
of Agriculture; Soil Conservation  
Service July 1989



Legend	
	Fair
	Good

# Sand and Gravel Construction Material in the Town of Mamakating



**Legend**

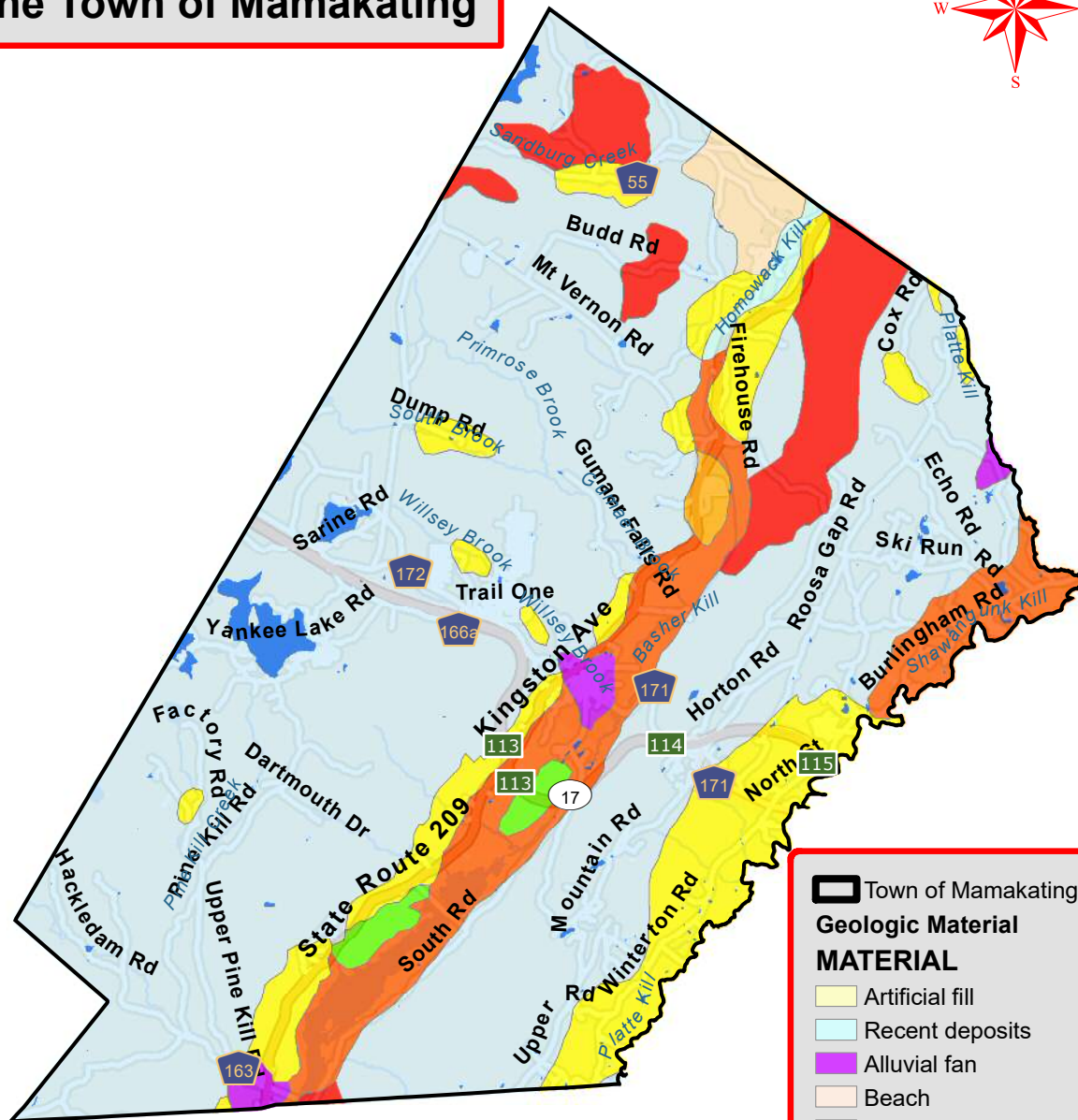
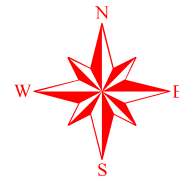
- Gravel
- Sand & Gravel
- Major Watersheds
- Roads
- D&H Canal

Prepared by: HydroQuest & Mid-Hudson Geosciences

Data Source: US Department of Agriculture; Soil Conservation Service July 1989



# Surficial Geology Map of the Town of Mamakating



**Town of Mamakating**

**Geologic Material**

**MATERIAL**

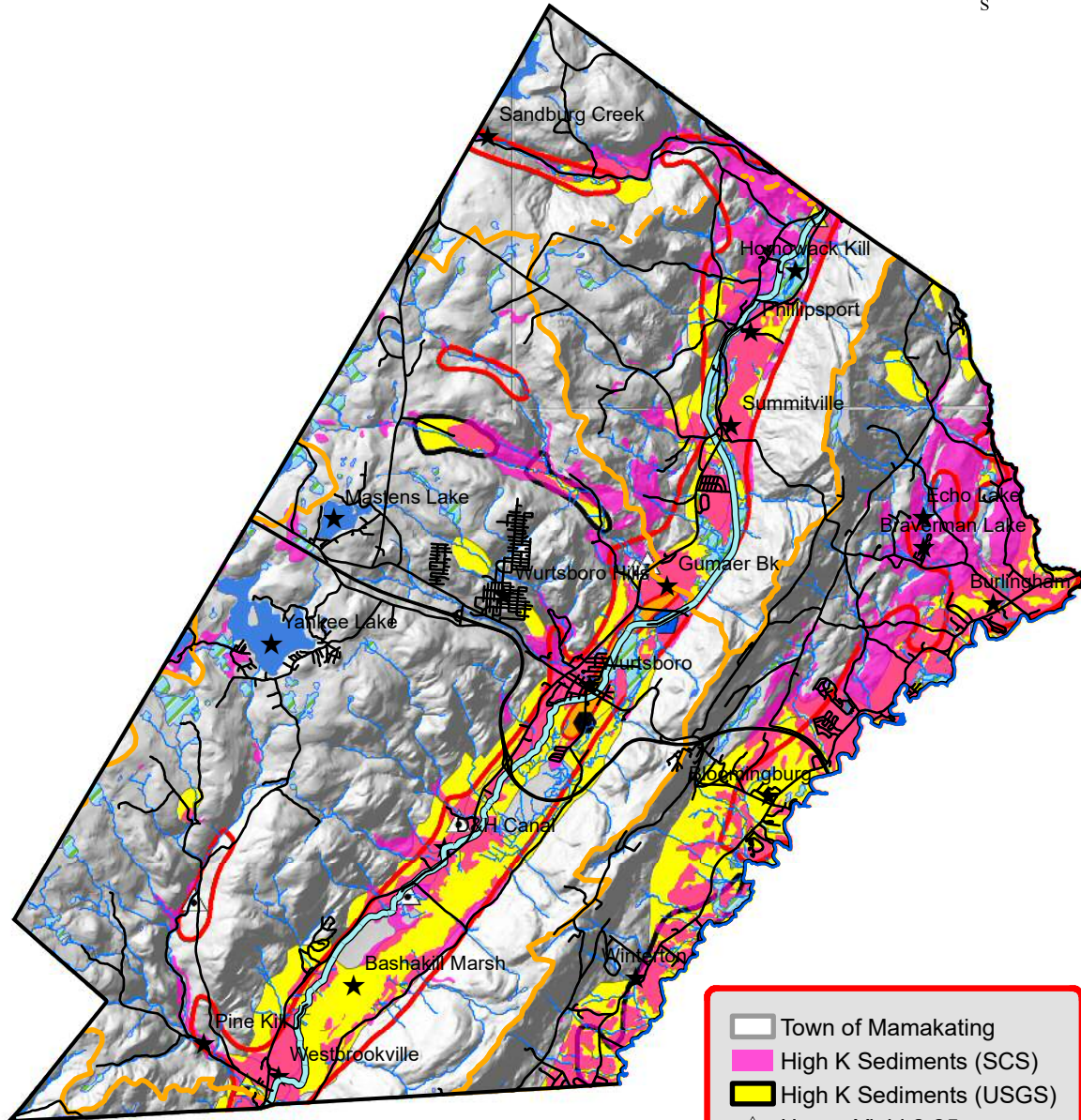
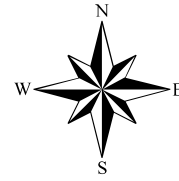
- Artificial fill
- Recent deposits
- Alluvial fan
- Beach
- Barrier island
- Water
- Kame deposits
- Kame moraine
- Lacustrine delta
- Lacustrine sand
- Lacustrine silt & clay
- Outwash sand & gravel
- Swamp deposits
- Bedrock
- Till
- Till moraine

Prepared by: HydroQuest & Mid-Hudson Geosciences

Source of geologic data; New York State Museum

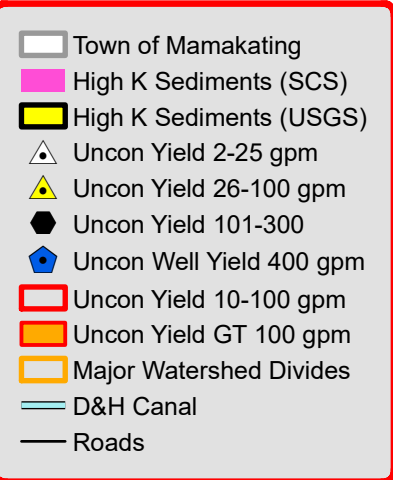


# Unconsolidated Aquifers in the Town of Mamakating, NY

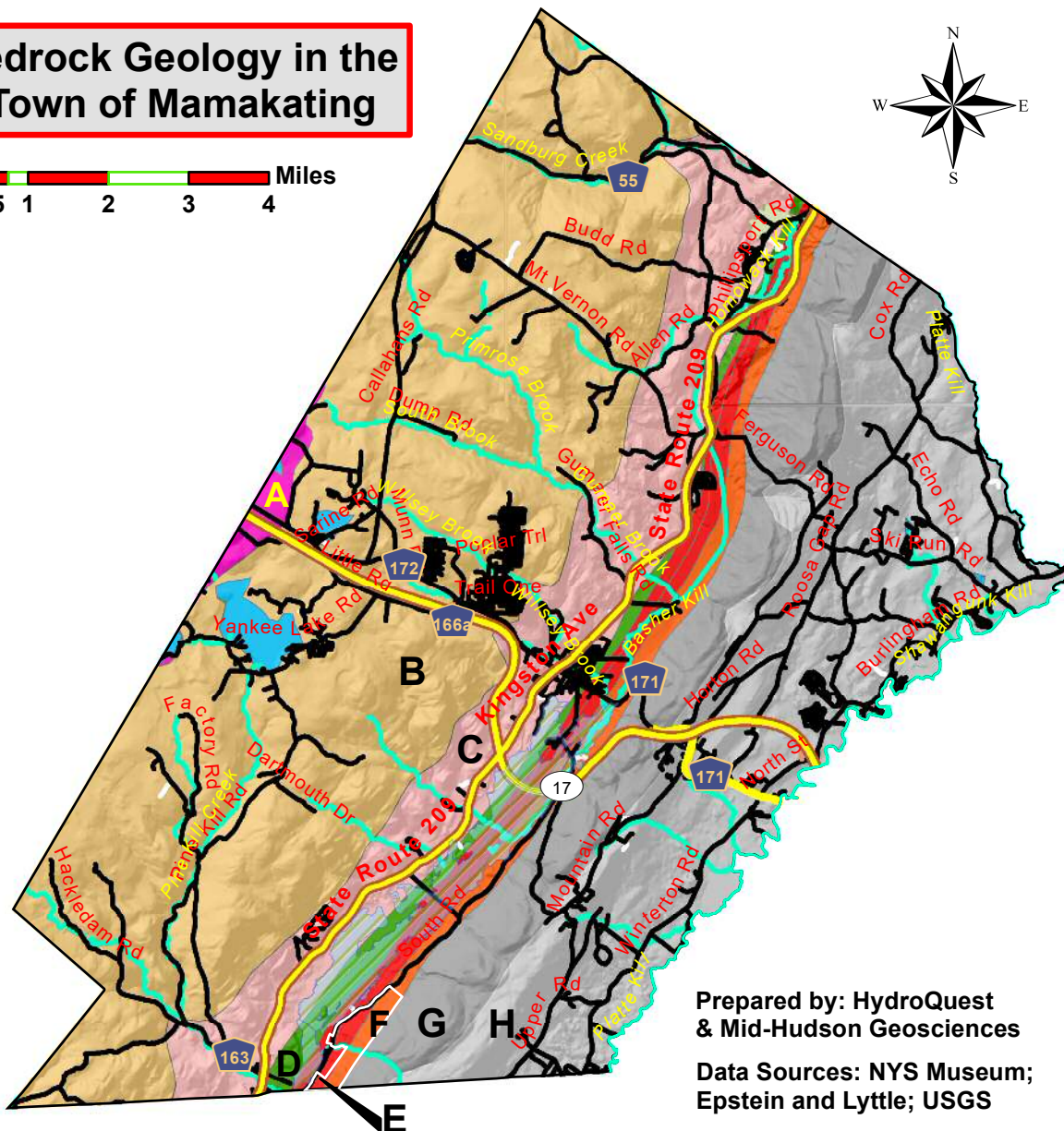
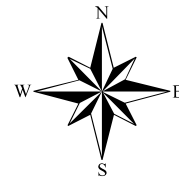
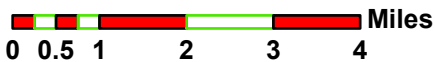


Prepared by: HydroQuest & Mid-Hudson Geosciences

Sources of geologic data:  
New York State Museum;  
Soil Conservation Service;  
NYSDEC; USGS; Town of Mamakating



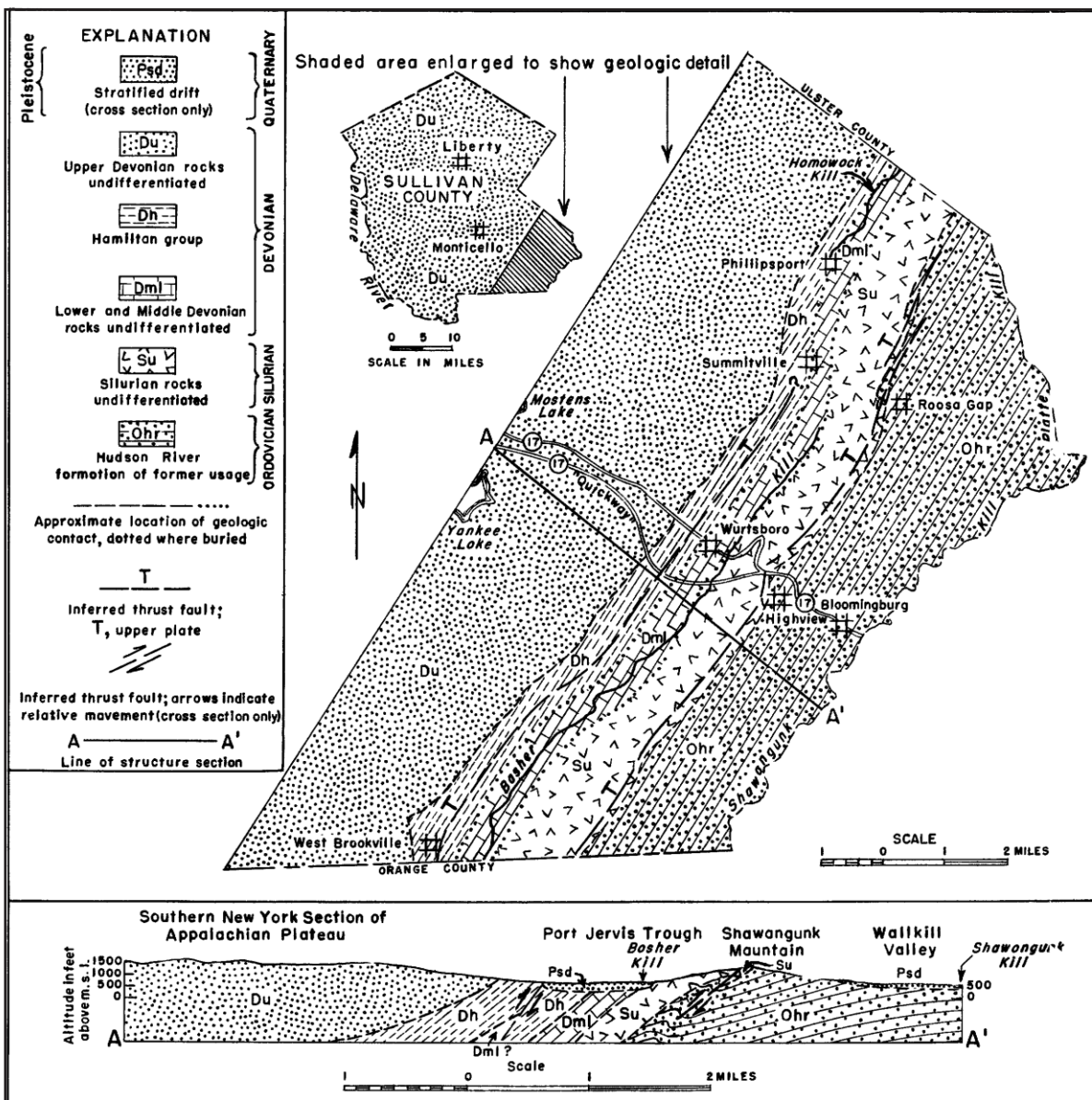
# Bedrock Geology in the Town of Mamakating



Prepared by: HydroQuest  
& Mid-Hudson Geosciences  
Data Sources: NYS Museum;  
Epstein and Lyttle; USGS

## GEOLOGY

- A: Lower Walton Fm - shale, sandstone, conglomerate
- B: Oneonta Fm - shale, sandstone
- C: Hamilton Group - shale, siltstone, sandstone, conglomerate
- D: Onondaga Ls - limestone (cave former), shale, chert, siltstone
- E: Helderberg Group - limestone, dolostone, some sandstone and shale; lower units are cave formers
- F: Rondout Fm - siltstone, limestone, shaly dolostone; some cave development
- G: Bloomsburg Fm - sandstone, qtzite, congl, siltstone and shale subdivided into:
  - Basher Kill Tongue
  - Ellenville Tongue
  - Wurtsboro Tongue
- G: Shawangunk Fm - qtzite, conglomerate, shale
- H: Martinsburg Fm - shale, graywacke, sandstone



Geologic cross section through Sullivan County. From Soren (USGS Survey Bulletin GW-46, 1961). See Bedrock Geology figure in this report for additional detail.

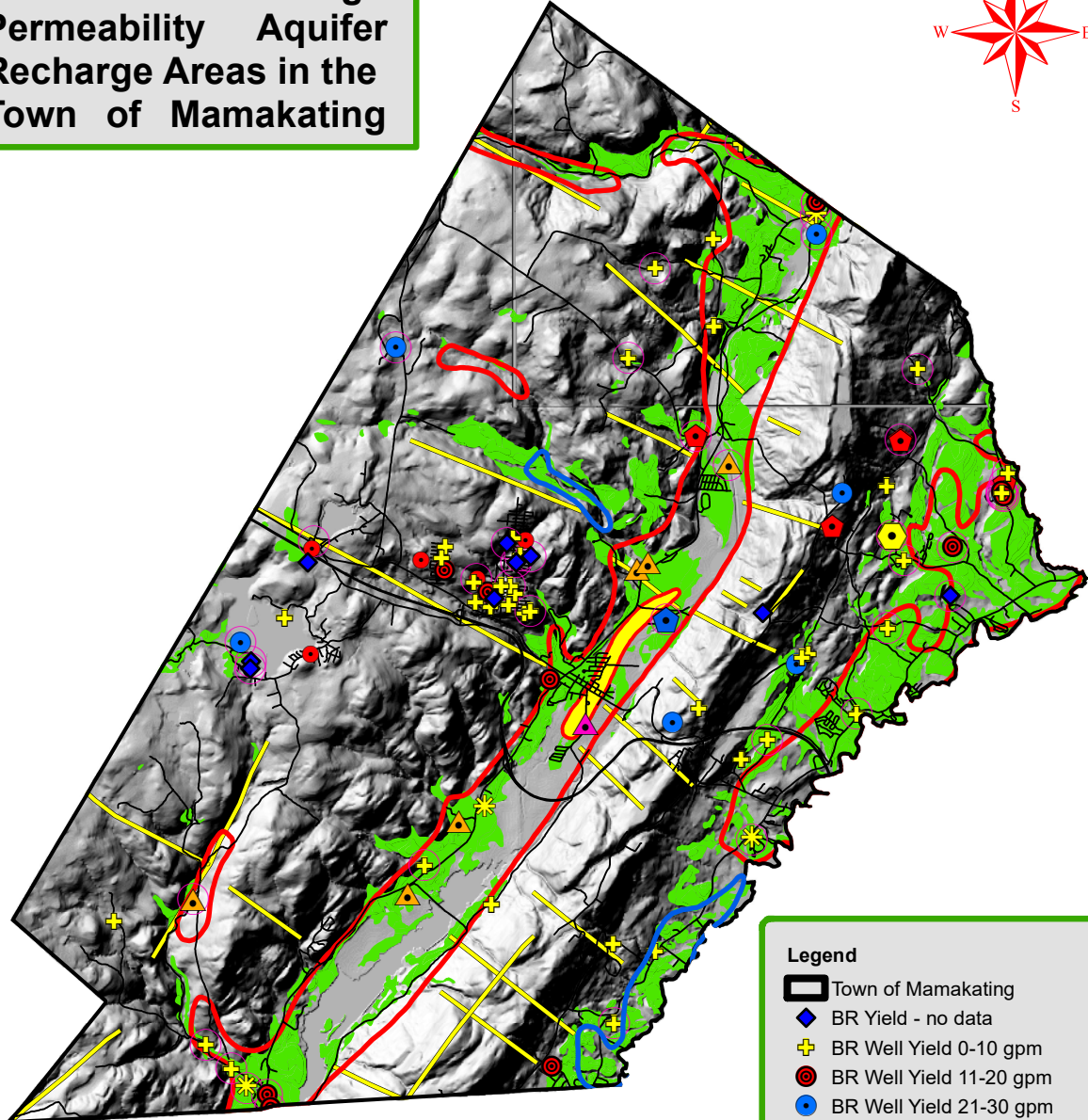
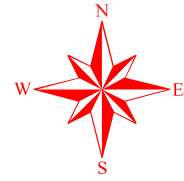


Flat-lying red shales and sandstone beds of the Oneonta Formation (Du) exposed near Mastens Lake in the above section.



Inclined Helderberg Group carbonate beds (Dml) exposed near the middle of the above geologic cross section.

# Well Yields and High Permeability Aquifer Recharge Areas in the Town of Mamakating



Groundwater yields in bedrock (BR) and unconsolidated (Uncon) wells in the Town of Mamakating (Data Sources: NYSDEC, Soren, Town of Mamakating). Unconsolidated sediment well yields were approximately assessed by USGS and NYSDEC. High permeability soil areas were derived from SCS soil survey map data (1989). These are comprised of Barbour, Chenango, Otisville, Pompton, Riverhead, Scio, Suncook, Tunkhannock, Unadilla, and Valois soils and gravel pit areas. Open pink circles are wells where the depth to bedrock is greater than 50 feet. Areas where these wells overlap with high permeability soils warrant investigation for possible high yield sand and gravel-rich unconsolidated aquifers. Map prepared by HydroQuest & Mid-Hudson Geosciences.

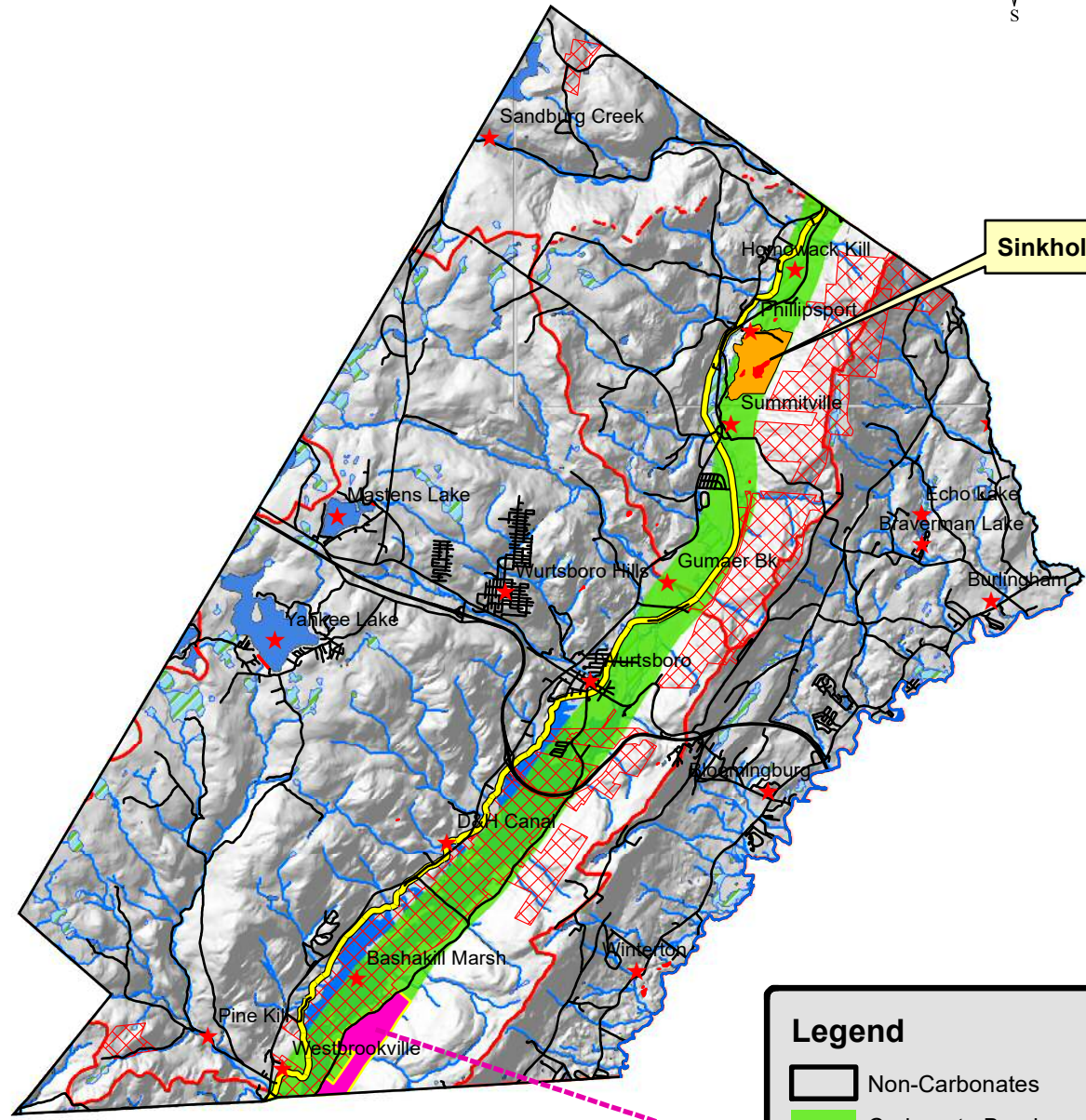
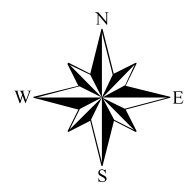
**Legend**

- Town of Mamakating
- BR Yield - no data
- BR Well Yield 0-10 gpm
- BR Well Yield 11-20 gpm
- BR Well Yield 21-30 gpm
- BR Well Yield 31-40 gpm
- BR Well Yield 41-100 gpm
- BR Well Yield 300 gpm
- Uncon Yield 2-25 gpm
- Uncon Yield 26-100 gpm
- Uncon Yield 101-300
- Uncon Well Yield 400 gpm
- Uncon Yield 10-100 gpm
- Uncon Yield GT 100 gpm
- Unknown Yield: Sand&Gravel
- High Permeability Soils
- Bedrock GT 50 ft
- Faults & Linears





# Carbonate & Non-Carbonate Bedrock Units in the Town of Mamakating

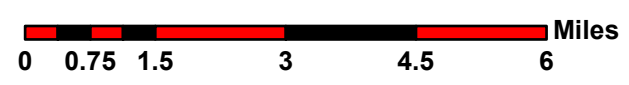


**Legend**

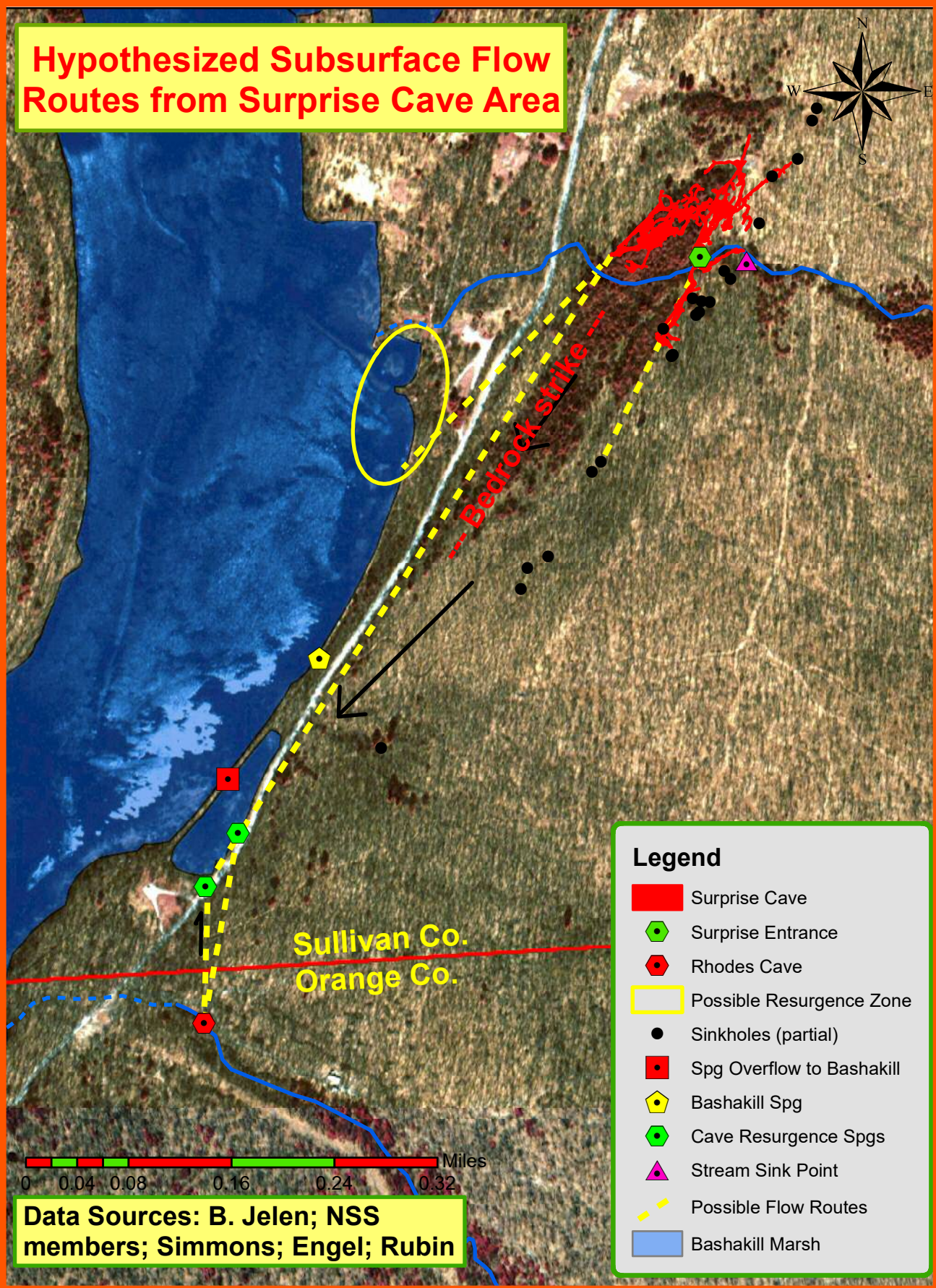
- Non-Carbonates
- Carbonate Band
- Karst Protection Area
- Karst Area
- NYSDEC Land
- Major Watersheds
- D&H Canal
- Roads

Prepared by: HydroQuest & Mid-Hudson Geosciences

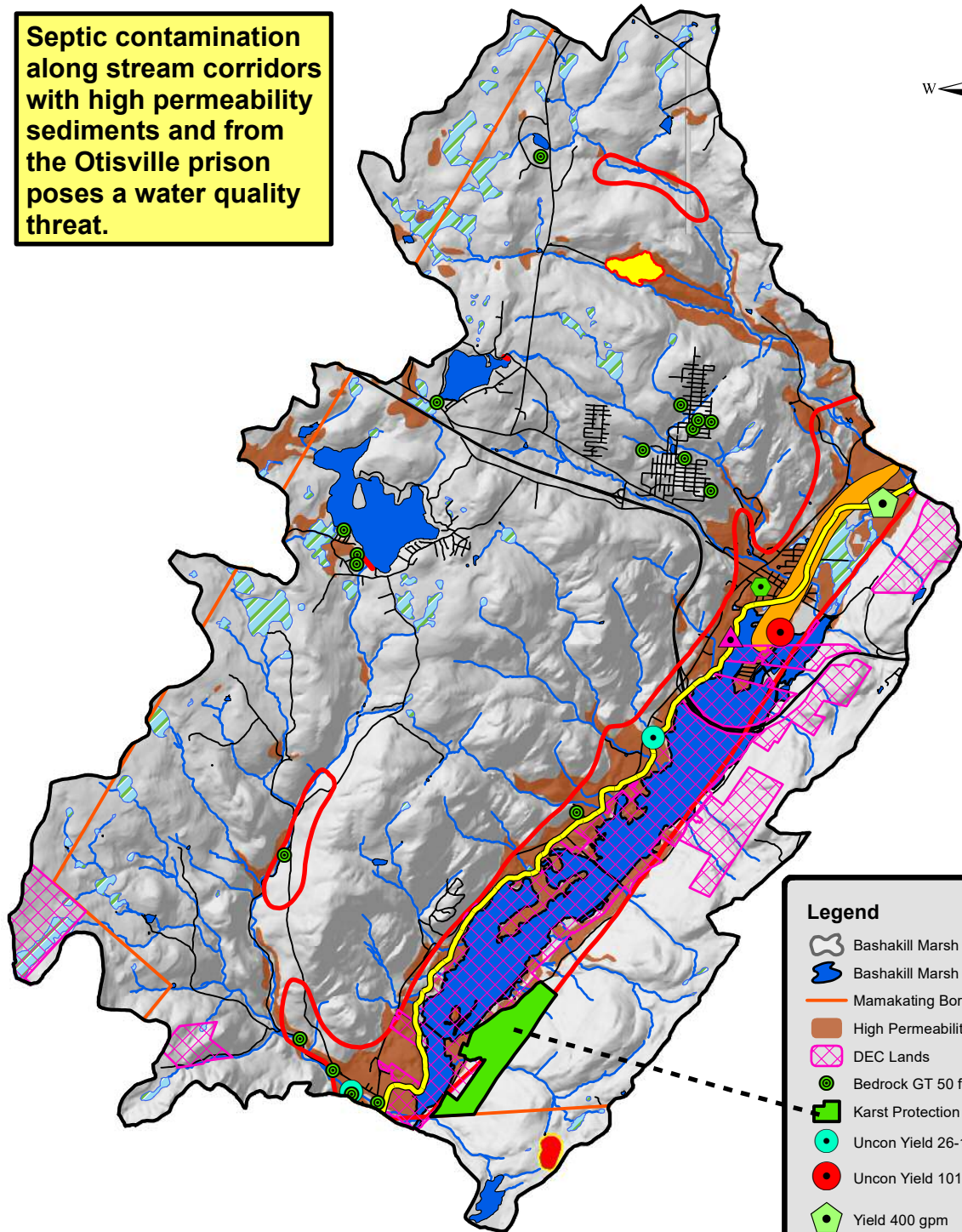
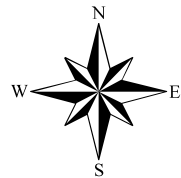
Data Source: NYS Museum



# Hypothesized Subsurface Flow Routes from Surprise Cave Area



**Septic contamination along stream corridors with high permeability sediments and from the Otisville prison poses a water quality threat.**



**High Permeability Sediments and Potential Contaminant Threats in the Basha Kill Marsh Watershed; Town of Mamakating, New York**



**Hydrology & Cartography:  
HydroQuest  
April 2017**

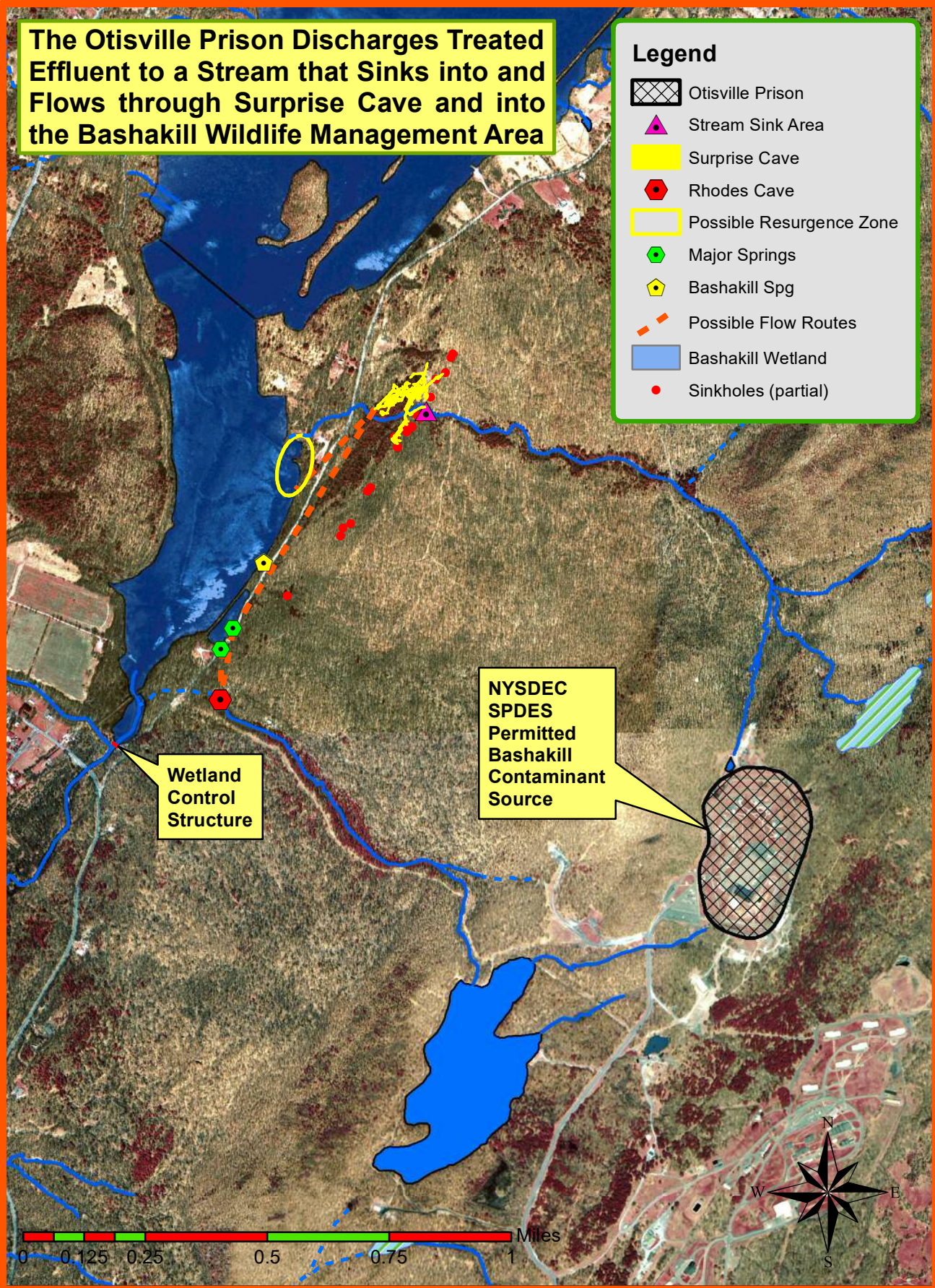
**Legend**

- Bashakill Marsh Watershed
- Bashakill Marsh
- Mamakating Border Segments
- High Permeability Soils
- DEC Lands
- Bedrock GT 50 ft
- Karst Protection Area
- Uncon Yield 26-100 gpm
- Uncon Yield 101-300
- Yield 400 gpm
- Uncon Yield 10-100 gpm
- Uncon Yield GT 100 gpm
- Otisville Prison
- Sullivan County Landfill
- Mamakating Town Dump
- Mamakating Lf Site
- D&H Canal
- Roads

**The Otisville Prison Discharges Treated Effluent to a Stream that Sinks into and Flows through Surprise Cave and into the Bashakill Wildlife Management Area**

**Legend**

-  Otisville Prison
-  Stream Sink Area
-  Surprise Cave
-  Rhodes Cave
-  Possible Resurgence Zone
-  Major Springs
-  Bashakill Spg
-  Possible Flow Routes
-  Bashakill Wetland
-  Sinkholes (partial)



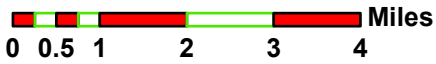
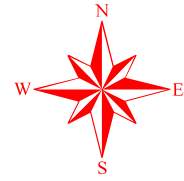
**Wetland Control Structure**

**NYSDEC SPDES Permitted Bashakill Contaminant Source**

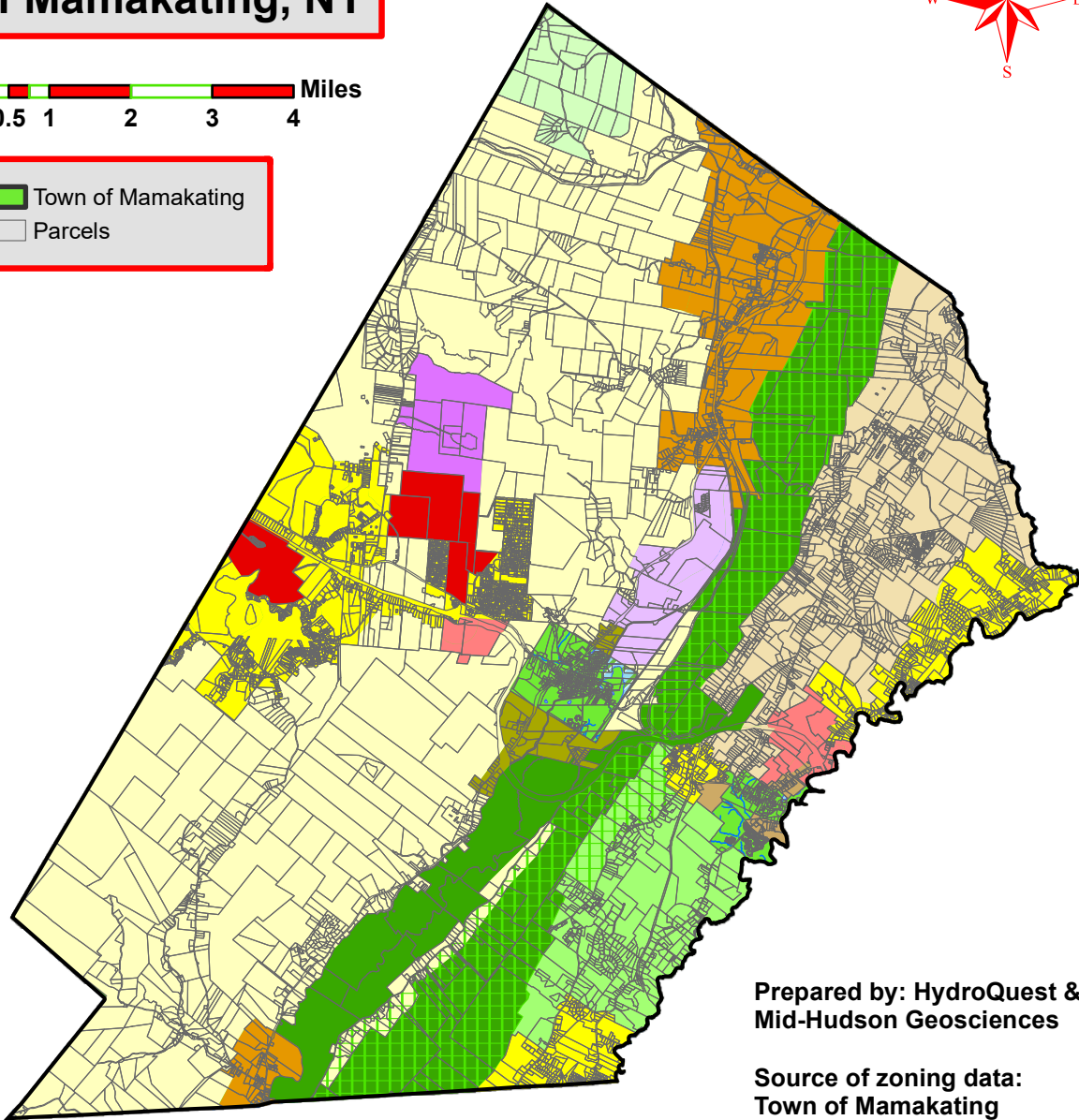
0 0.125 0.25 0.5 0.75 1 Miles



# Zoning in the Town of Mamakating, NY



Town of Mamakating  
 Parcels





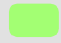



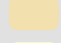
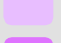






Prepared by: HydroQuest & Mid-Hudson Geosciences

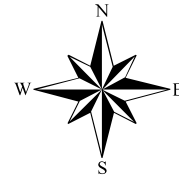
Source of zoning data: Town of Mamakating

## Zoning District

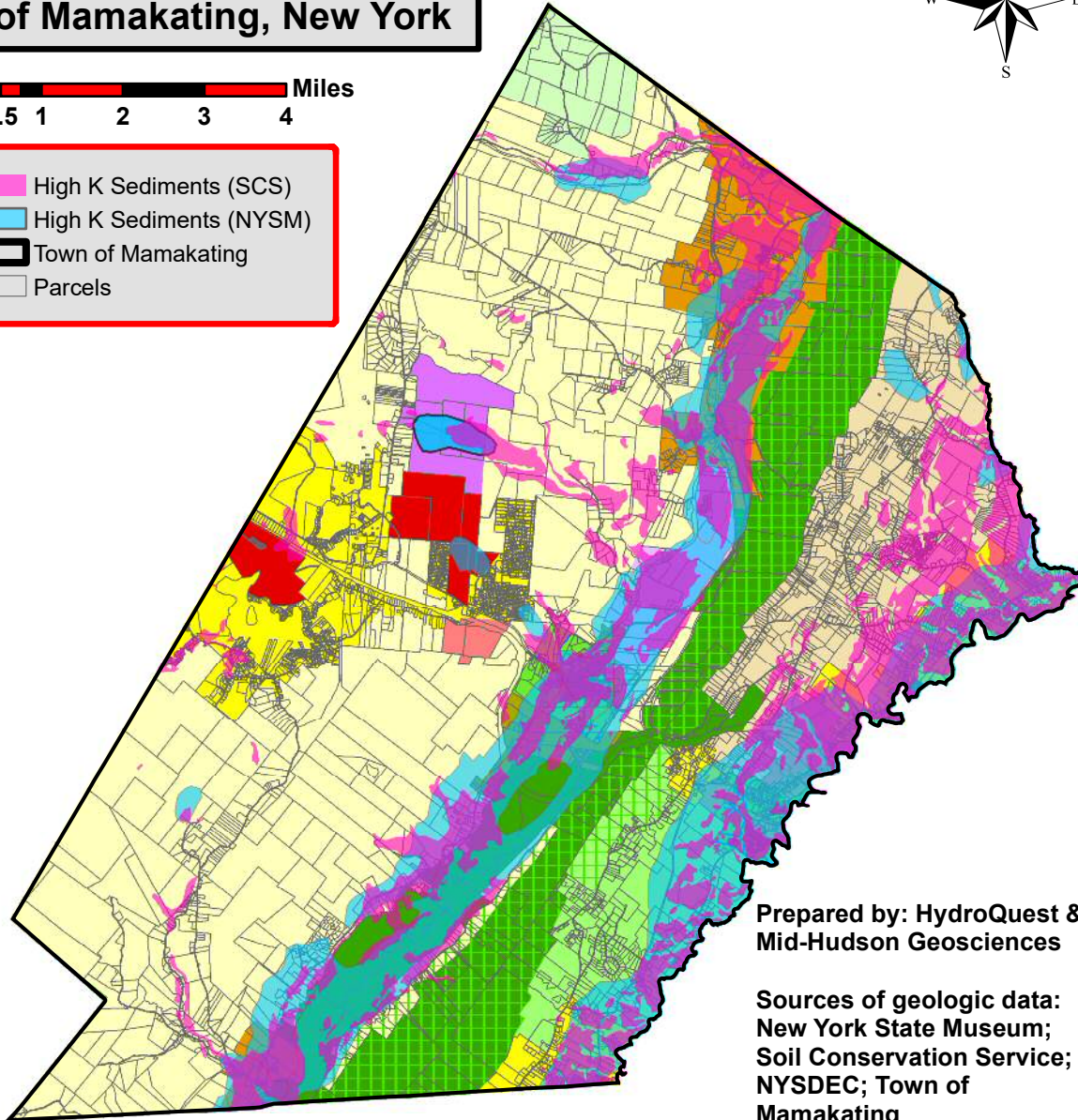
### ZONEID

	GUNK	Shawangunk Ridge Overlay District		NR	Neighborhood Residential
	RVP	Ridge and Valley Protection		HC	Hamlet Center
	WRA	Winterton Residential Agricultural		VC	Village Center
	MRA	Mountain Residential Agricultural		TC	Town Center
	BR	Burlingham Residential		LIO	Light Industrial/Office
	MG	Mountain Greenbelt		IO	Industrial/Office
				PO	Planned Office
				PRO	Planned Resort - Office Development

# Zoning & High Permeability (K) Sediments in the Town of Mamakating, New York



- High K Sediments (SCS)
- High K Sediments (NYSM)
- Town of Mamakating
- Parcels



Prepared by: HydroQuest & Mid-Hudson Geosciences

Sources of geologic data:  
New York State Museum;  
Soil Conservation Service;  
NYSDEC; Town of Mamakating

## Zoning District

- |  |                                    |  |                                     |
|--|------------------------------------|--|-------------------------------------|
| <span style="display: inline-block; width: 15px; height: 10px; border: 1px solid black; background: repeating-linear-gradient(45deg, transparent, transparent 2px, black 2px, black 4px); margin-right: 5px;"></span> GUNK | Shawangunk Ridge Overlay District  | <span style="display: inline-block; width: 15px; height: 10px; background-color: #FFA500; border: 1px solid black; margin-right: 5px;"></span> HC  | Hamlet Center                       |
| <span style="display: inline-block; width: 15px; height: 10px; background-color: #008000; border: 1px solid black; margin-right: 5px;"></span> RVP   | Ridge and Valley Protection        | <span style="display: inline-block; width: 15px; height: 10px; background-color: #D2B48C; border: 1px solid black; margin-right: 5px;"></span> VC  | Village Center                      |
| <span style="display: inline-block; width: 15px; height: 10px; background-color: #90EE90; border: 1px solid black; margin-right: 5px;"></span> WRA   | Winterton Residential Agricultural | <span style="display: inline-block; width: 15px; height: 10px; background-color: #808000; border: 1px solid black; margin-right: 5px;"></span> TC  | Town Center                         |
| <span style="display: inline-block; width: 15px; height: 10px; background-color: #90EE90; border: 1px solid black; margin-right: 5px;"></span> MRA   | Mountain Residential Agricultural  | <span style="display: inline-block; width: 15px; height: 10px; background-color: #DDA0DD; border: 1px solid black; margin-right: 5px;"></span> LIO | Light Industrial/Office             |
| <span style="display: inline-block; width: 15px; height: 10px; background-color: #FFDAB9; border: 1px solid black; margin-right: 5px;"></span> BR  | Burlingham Residential             | <span style="display: inline-block; width: 15px; height: 10px; background-color: #DDA0DD; border: 1px solid black; margin-right: 5px;"></span> IO  | Industrial/Office                   |
| <span style="display: inline-block; width: 15px; height: 10px; background-color: #FFFF00; border: 1px solid black; margin-right: 5px;"></span> MG  | Mountain Greenbelt                 | <span style="display: inline-block; width: 15px; height: 10px; background-color: #FF6347; border: 1px solid black; margin-right: 5px;"></span> PO  | Planned Office                      |
| <span style="display: inline-block; width: 15px; height: 10px; background-color: #FFFF00; border: 1px solid black; margin-right: 5px;"></span> NR  | Neighborhood Residential           | <span style="display: inline-block; width: 15px; height: 10px; background-color: #FF0000; border: 1px solid black; margin-right: 5px;"></span> PRO | Planned Resort - Office Development |

